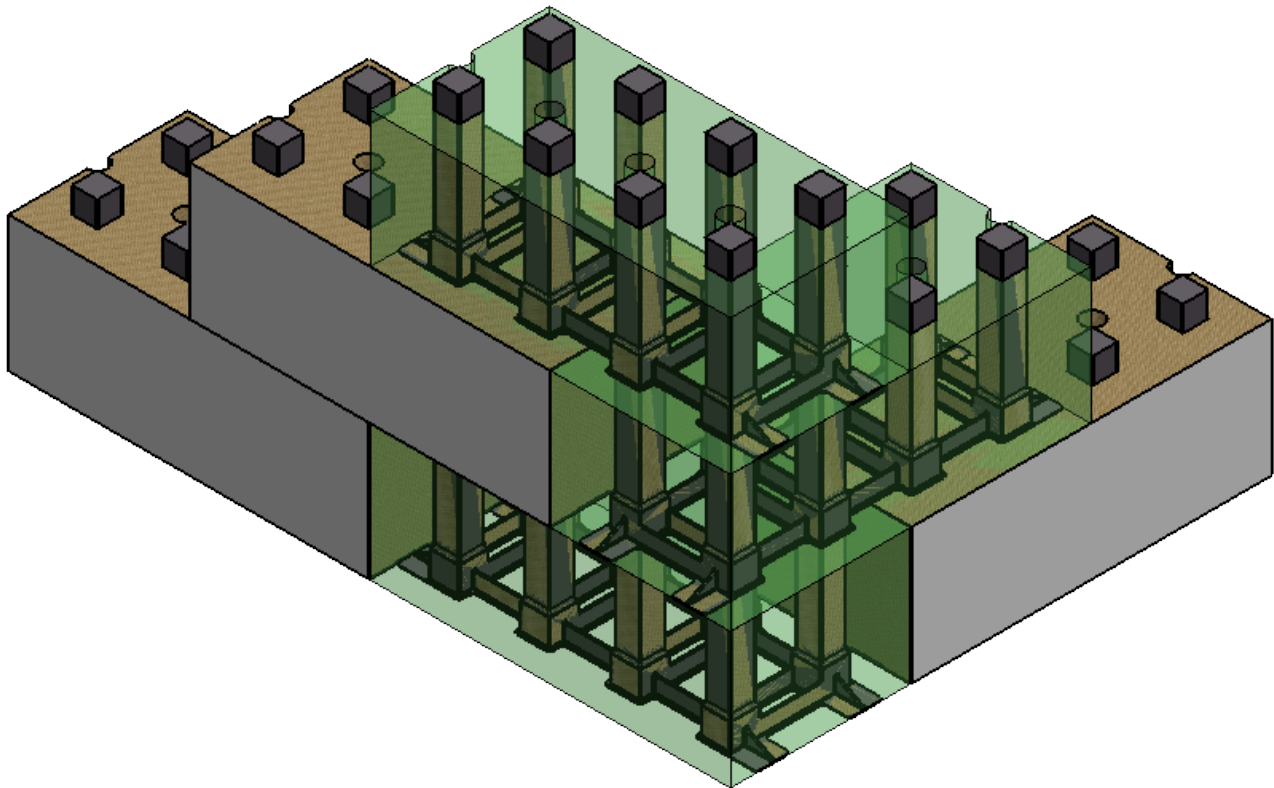


TABLE OF CONTENTS

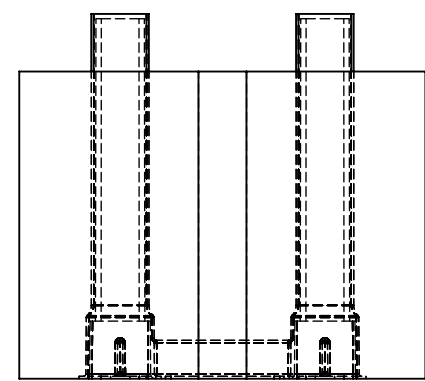
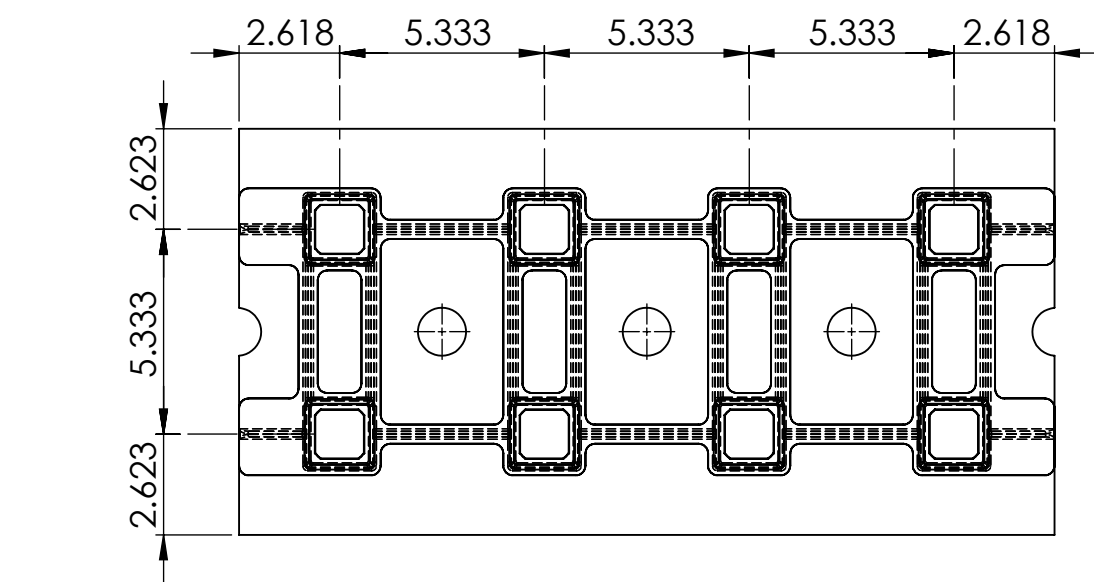
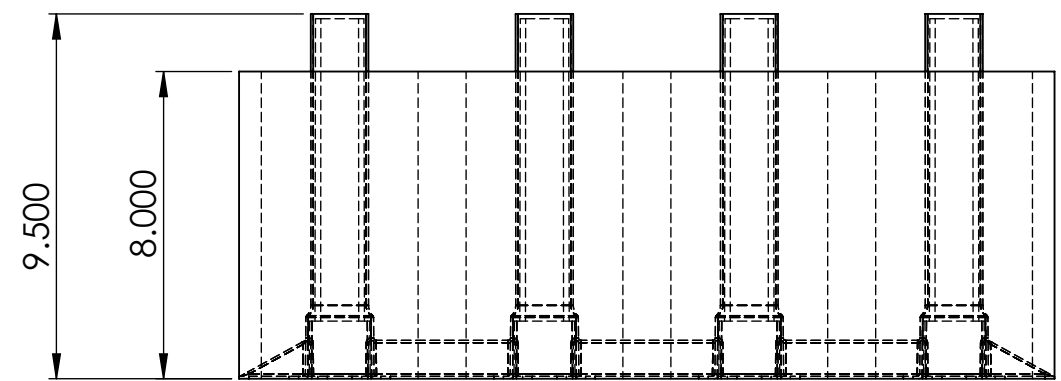
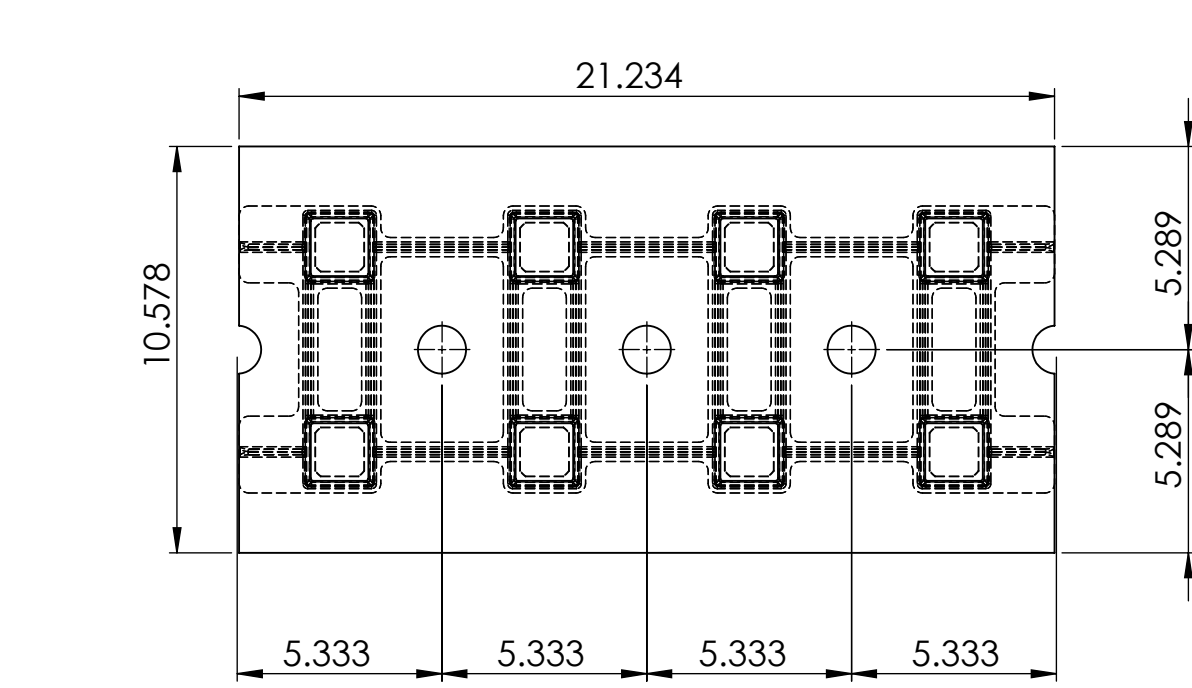
SHEET #	COMPONENTS
2	STANDARD BLOCK DETAILS
3	DIFFERENT BLOCK SIZES
4	STARTER STRIP DETAILS
5	INTERLOCKING BLOCKS
	WALL SYSTEM COMPARISONS
6	CONVENTIONAL WOOD FRAME CONSTRUCTION VS JBF
7	CONVENTIONAL CONCRETE BLOCK WALL CONSTRUCTION VS JBF
	TYPICAL CONSTRUCTION
8-9	TYPICAL WALL CONSTRUCTION
10-12	WINDOW/DOOR FRAMING DETAILS
13-14	ELECTRICAL WIRING DETAILS
15-17	RESIDENTIAL CONSTRUCTION
18	INDUSTRIAL CONSTRUCTION
19-20	STEEL JOIST LOCATION DETAILS
21	PARAPET DETAIL
22-23	OVER HEAD DOOR FRAMING DETAILS
24	FIRE WALL DETAIL



PROPRIETARY AND CONFIDENTIAL
THE INFORMATION CONTAINED IN THIS DRAWING IS THE SOLE PROPERTY OF JUST BIOFIBER STRUCTURAL SOLUTIONS CORP. ANY REPRODUCTION IN PART OR AS A WHOLE WITHOUT THE WRITTEN PERMISSION OF JUST BIOFIBER STRUCTURAL SOLUTIONS CORP. IS PROHIBITED. PROTECTED BY MULTIPLE PATENTS.
DO NOT SCALE DRAWING

TITLE: **TABLE OF CONTENTS**

SIZE	DWG. NO.	REV
B	JBF-DRW-Manual	
SCALE: 1:8	2016-03-14	SHEET 1 OF 24

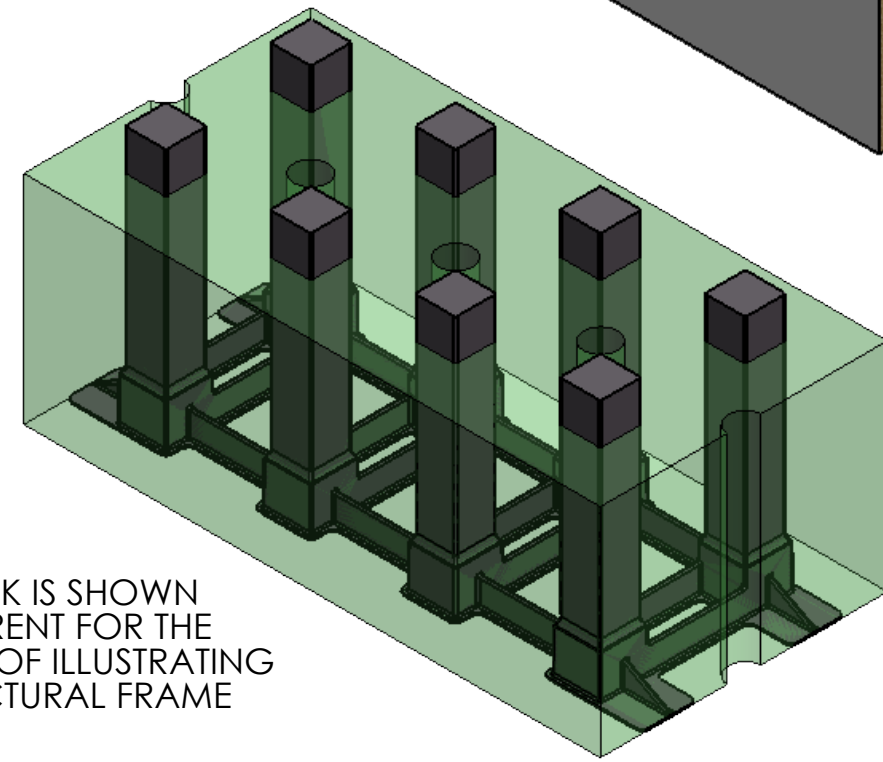
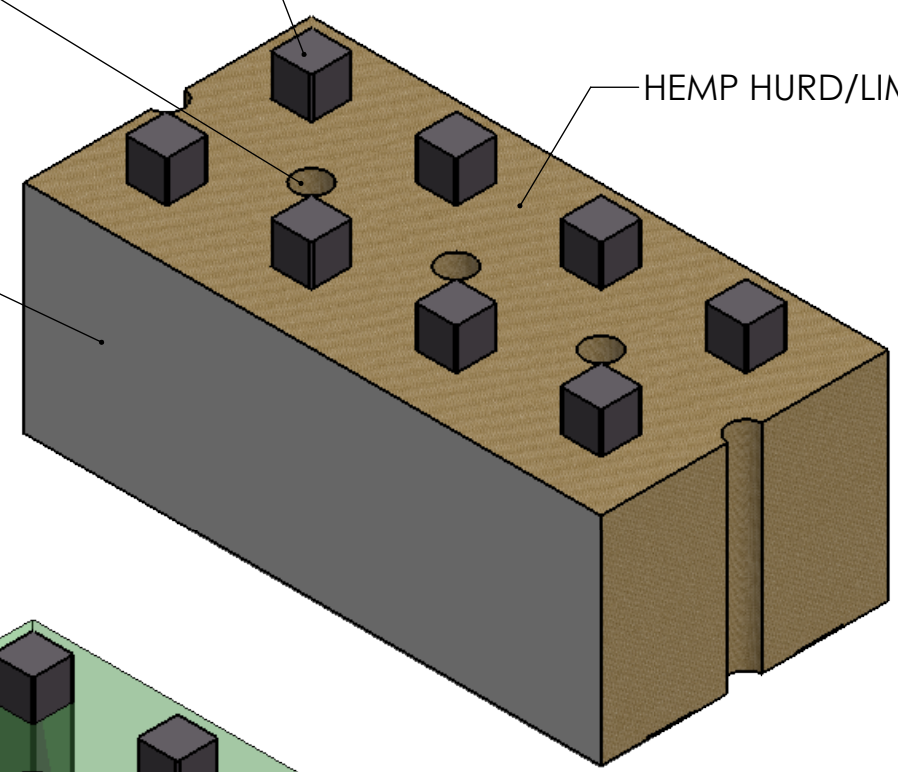


STRUT OF THE STRUCTURAL FRAME


1 1/4" (32mm) CONDUIT FOR ELECTRICAL WIRING

FACTORY SCRATCH COAT

HEMP HURD/LIME MIX



THIS BLOCK IS SHOWN
TRANSPARENT FOR THE
PURPOSE OF ILLUSTRATING
THE STRUCTURAL FRAME
WITHIN



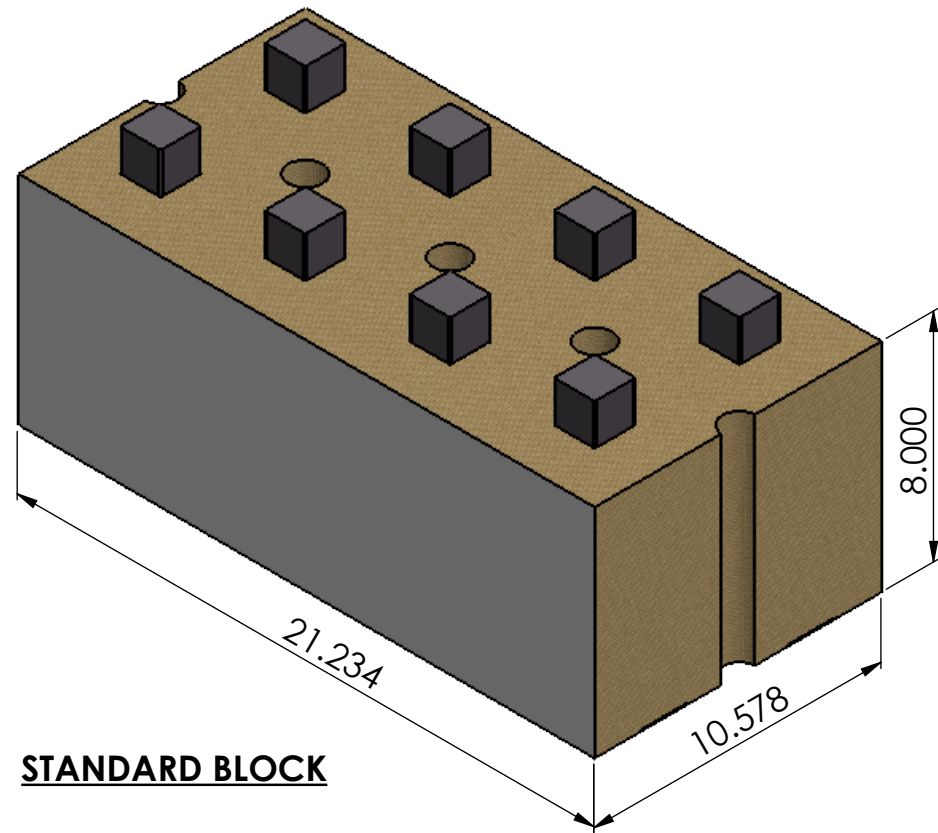
JustBioFiber
Structural Solutions

TITLE:

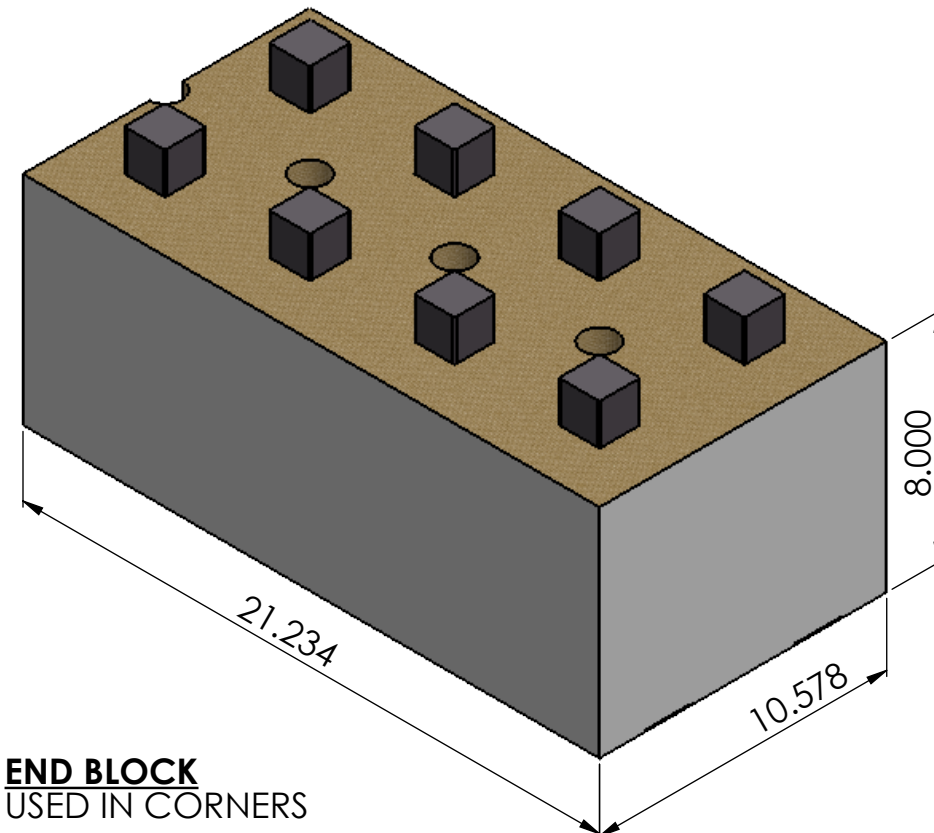
STANDARD BLOCK DETAIL

SIZE	DWG. NO.	REV
B	JBF-DRW-Manual	
SCALE: 1:5	2016-03-14	SHEET 2 OF 24

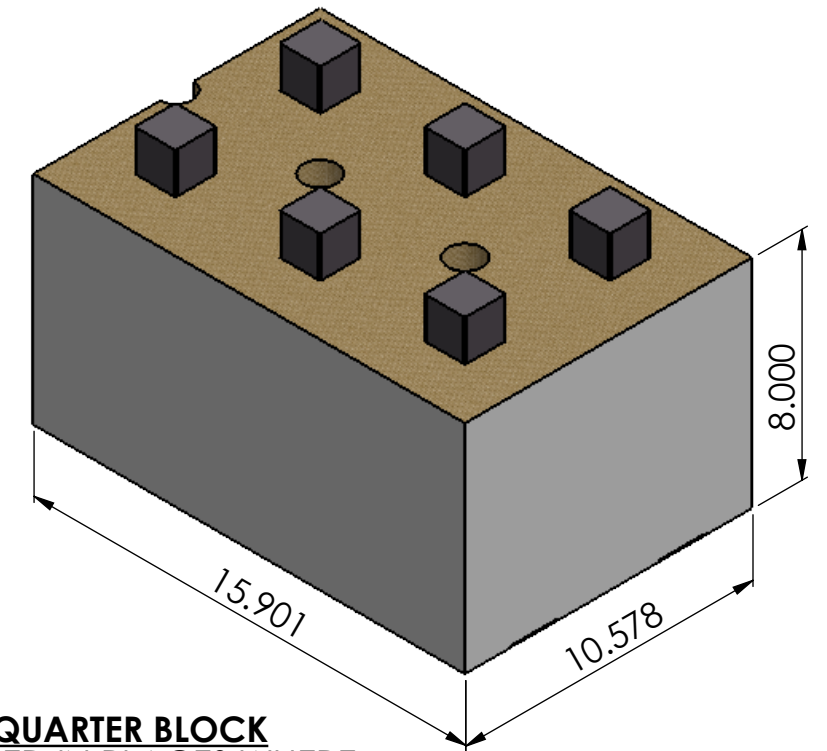
PROPRIETARY AND CONFIDENTIAL
 THE INFORMATION CONTAINED IN THIS DRAWING IS THE SOLE PROPERTY OF JUST BIOFIBER STRUCTURAL SOLUTIONS CORP. ANY REPRODUCTION IN PART OR AS A WHOLE WITHOUT THE WRITTEN PERMISSION OF JUST BIOFIBER STRUCTURAL SOLUTIONS CORP. IS PROHIBITED. PROTECTED BY MULTIPLE PATENTS.
 DO NOT SCALE DRAWING



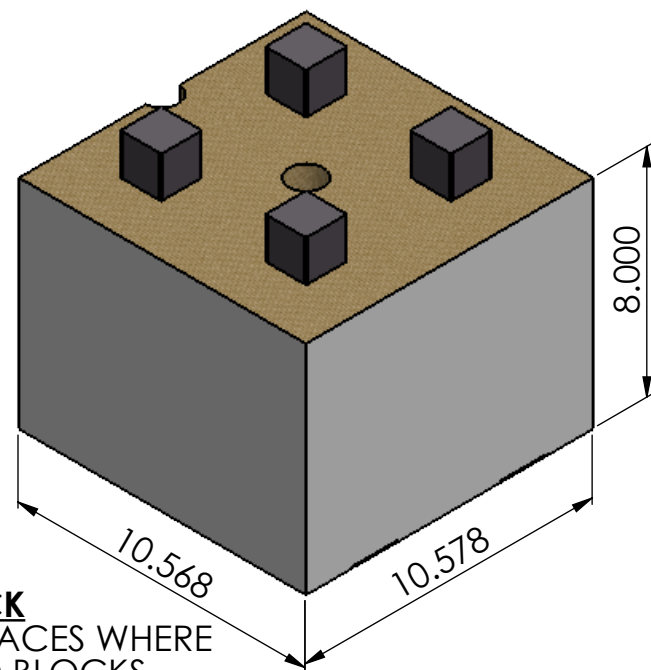
STANDARD BLOCK



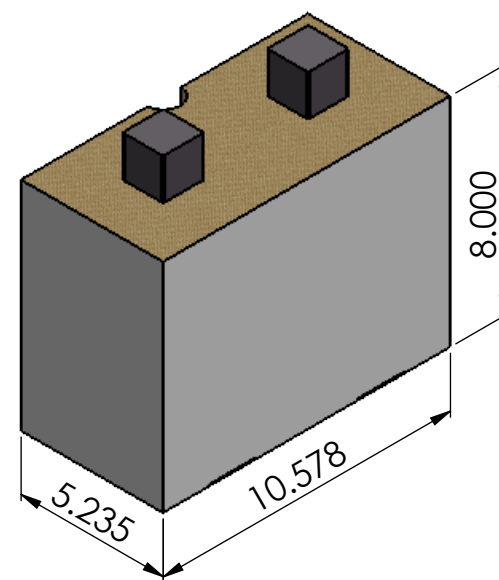
END BLOCK
USED IN CORNERS



3 QUARTER BLOCK
USED IN PLACES WHERE
STANDARD BLOCKS
DON'T FIT



HALF BLOCK
USED IN PLACES WHERE
STANDARD BLOCKS
DON'T FIT



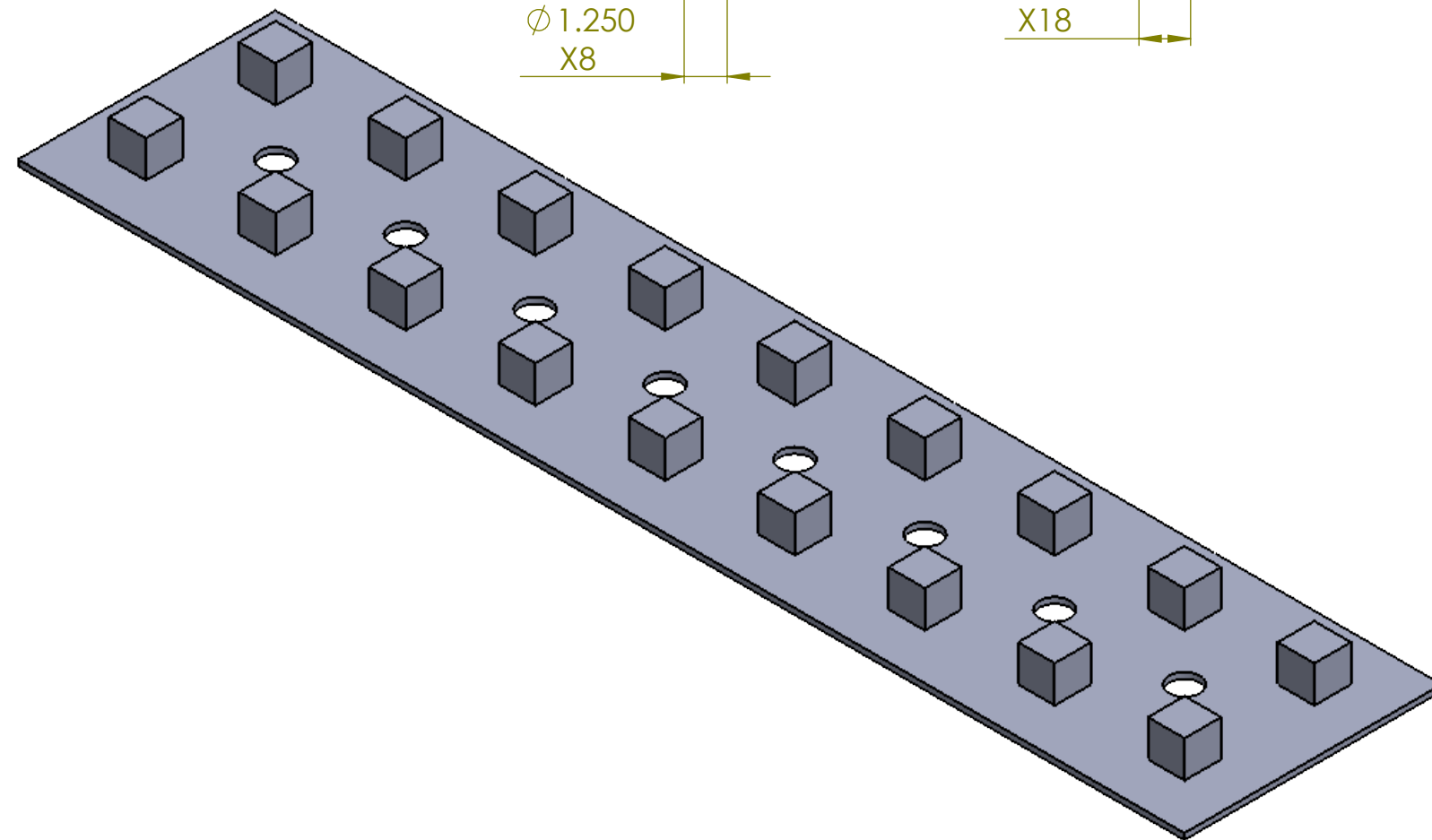
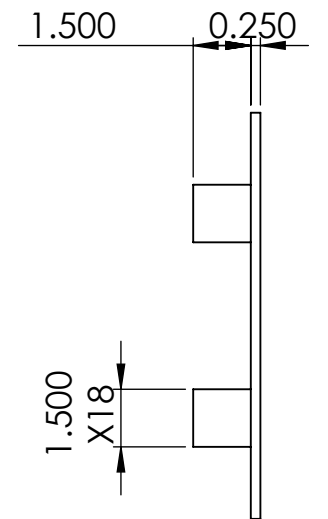
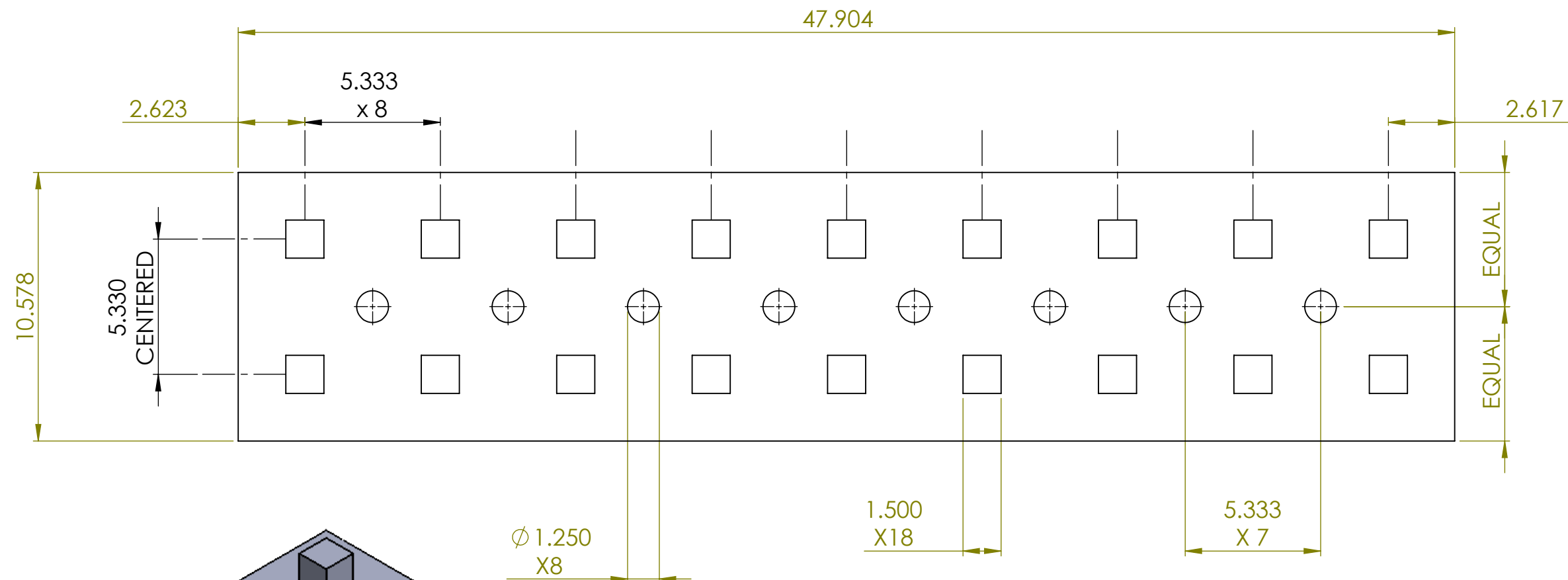
QUARTER BLOCK
USED IN PLACES WHERE
STANDARD BLOCKS
DON'T FIT




PROPRIETARY AND CONFIDENTIAL
THE INFORMATION CONTAINED IN THIS DRAWING IS THE SOLE PROPERTY OF JUST BIOFIBER STRUCTURAL SOLUTIONS CORP. ANY REPRODUCTION IN PART OR AS A WHOLE WITHOUT THE WRITTEN PERMISSION OF JUST BIOFIBER STRUCTURAL SOLUTIONS CORP. IS PROHIBITED. PROTECTED BY MULTIPLE PATENTS.
DO NOT SCALE DRAWING

TITLE: **DIFFERENT
BLOCK SIZES**

SIZE	DWG. NO.	REV
B	JBF-DRW-Manual	
SCALE: 1:5	2016-03-14	SHEET 3 OF 24

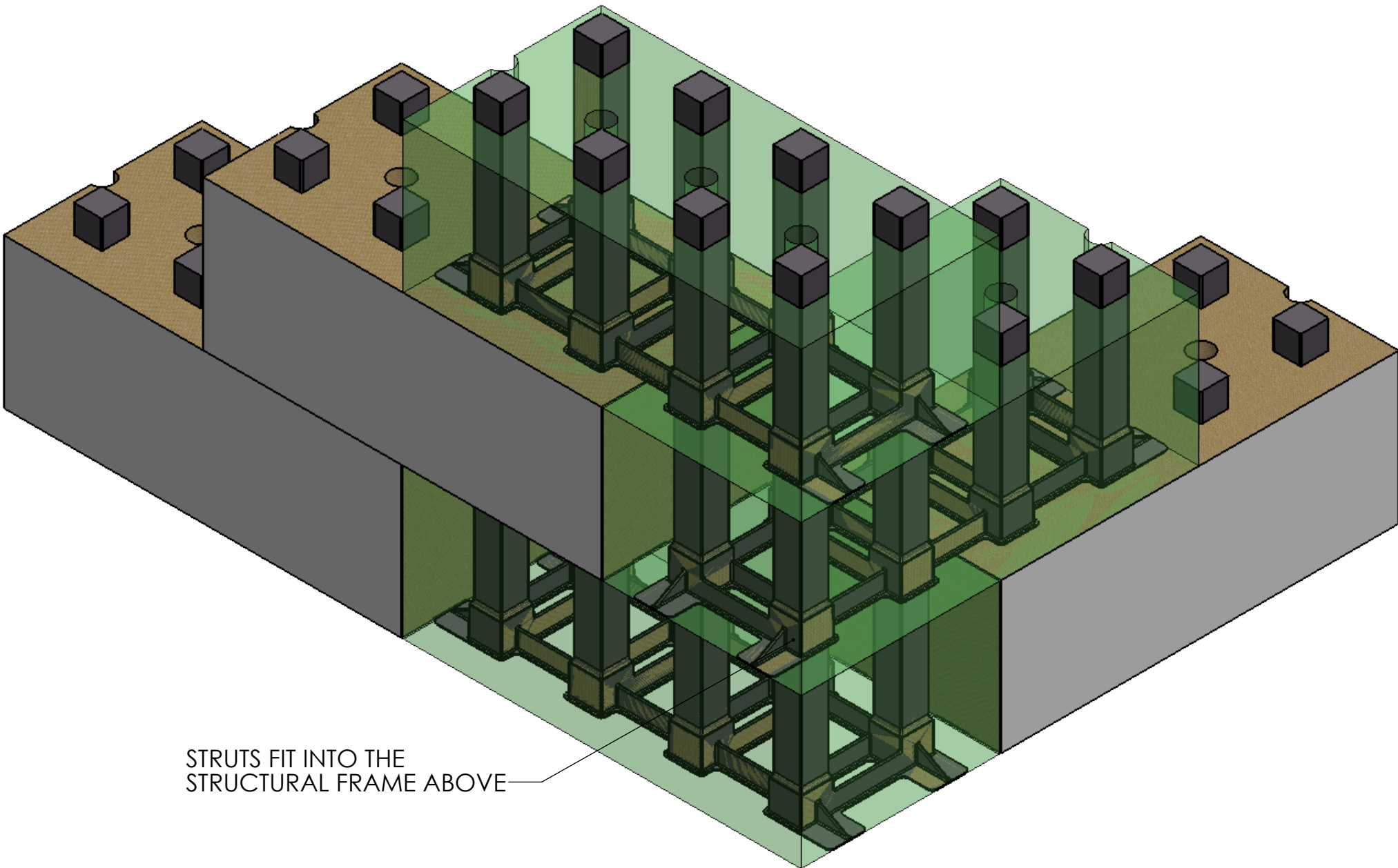


			TITLE: STARTER STRIP DETAIL		
<small>PROPRIETARY AND CONFIDENTIAL THE INFORMATION CONTAINED IN THIS DRAWING IS THE SOLE PROPERTY OF JUST BIOFIBER STRUCTURAL SOLUTIONS CORP. ANY REPRODUCTION IN PART OR AS A WHOLE WITHOUT THE WRITTEN PERMISSION OF JUST BIOFIBER STRUCTURAL SOLUTIONS CORP. IS PROHIBITED. PROTECTED BY MULTIPLE PATENTS. DO NOT SCALE DRAWING</small>			SIZE B	DWG. NO. JBF-DRW-Manual	REV
SCALE: 1:5			2016-03-14		SHEET 4 OF 24

THESE BLOCKS ARE SHOWN
TRANSPARENT FOR THE
PURPOSE OF ILLUSTRATING
THE STRUCTURAL FRAMES
WITHIN

ALL ADJACENT FACES OF ALL BLOCKS TO BE
BONDED TOGETHER WITH LIME ADHESIVE.

ALL STRUTS OF THE STRUCTURAL FRAME IN THE
BLOCKS ARE TO BE BONDED WITH THE STRUCTURAL
FRAME ABOVE WITH ADHESIVE, FORMING A
MONOLITHIC STRUCTURE.



STRUTS FIT INTO THE
STRUCTURAL FRAME ABOVE

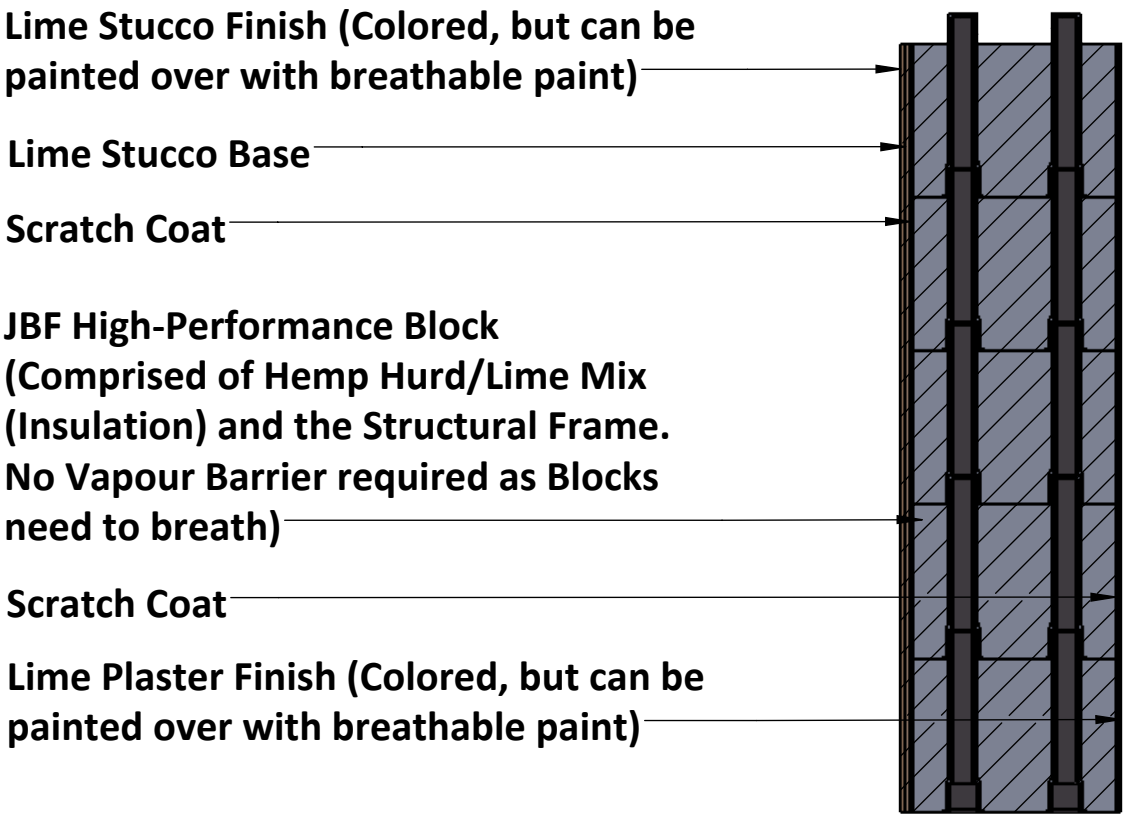


PROPRIETARY AND CONFIDENTIAL
THE INFORMATION CONTAINED IN THIS DRAWING IS THE SOLE PROPERTY OF JUST
BIOFIBER STRUCTURAL SOLUTIONS CORP. ANY REPRODUCTION IN PART OR AS
A WHOLE WITHOUT THE WRITTEN PERMISSION OF JUST BIOFIBER STRUCTURAL
SOLUTIONS CORP. IS PROHIBITED. PROTECTED BY MULTIPLE PATENTS.
DO NOT SCALE DRAWING

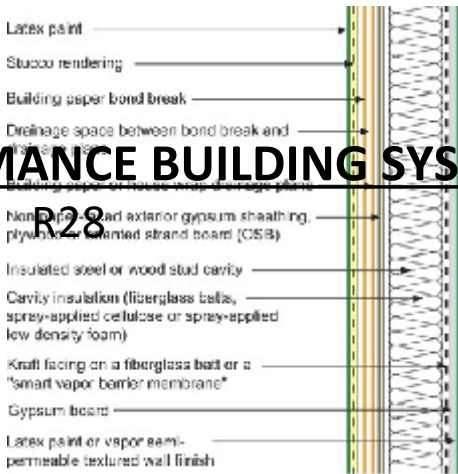
TITLE:
**INTERLOCKING
BLOCKS**

SIZE	DWG. NO.	REV
B	JBF-DRW-Manual	

SCALE: 1:5	2016-03-14	SHEET 5 OF 24
------------	------------	---------------



JBF HIGH-PERFORMANCE BUILDING SYSTEM



R28

CONVENTIONAL WOOD FRAME

CONSTRUCTION

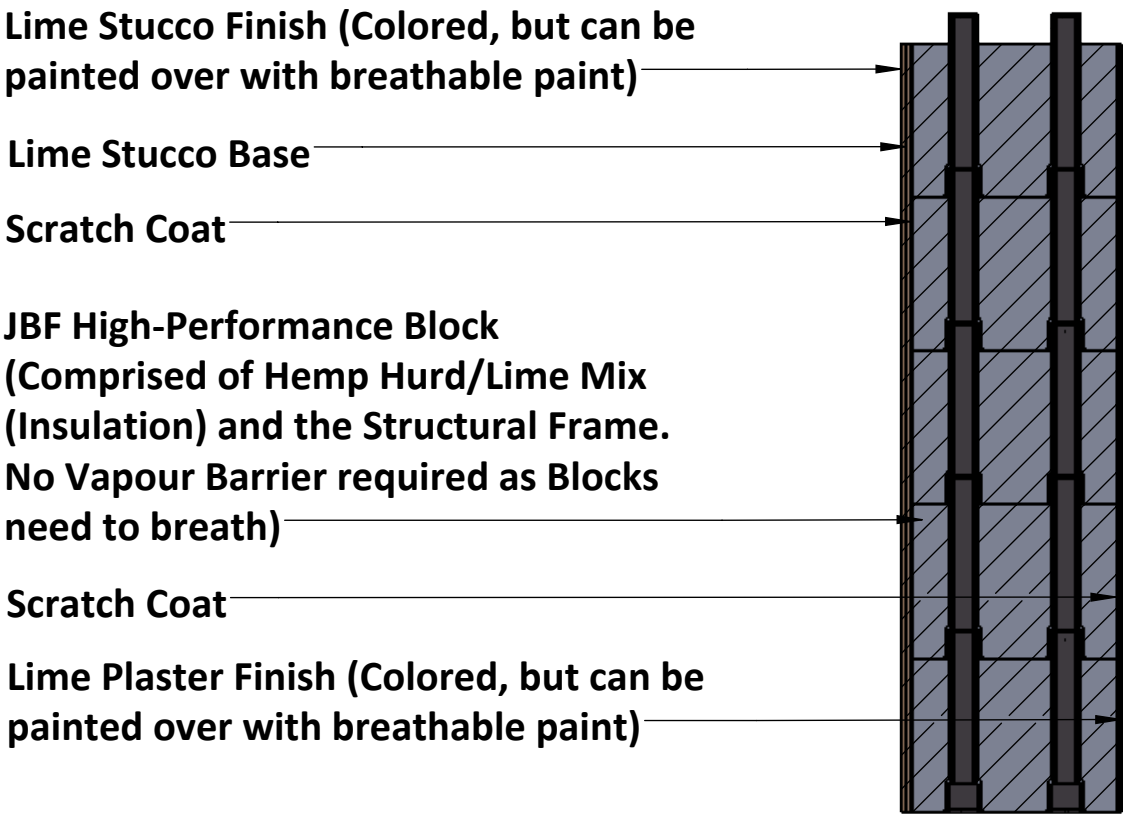
R21



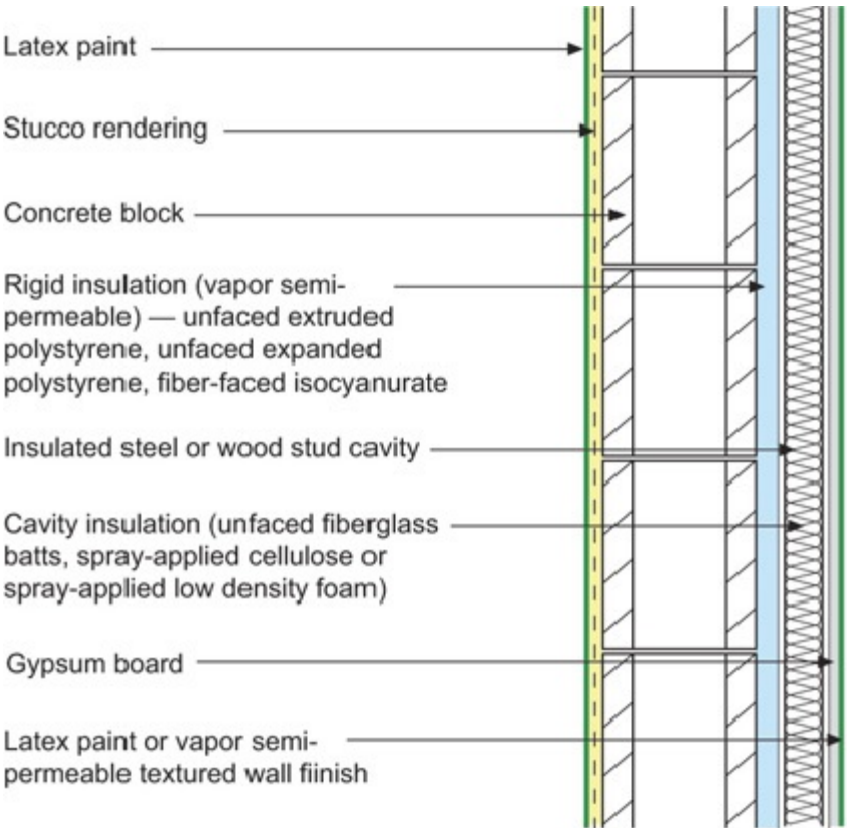
PROPRIETARY AND CONFIDENTIAL
THE INFORMATION CONTAINED IN THIS DRAWING IS THE SOLE PROPERTY OF JUST BIOFIBER STRUCTURAL SOLUTIONS CORP. ANY REPRODUCTION IN PART OR AS A WHOLE WITHOUT THE WRITTEN PERMISSION OF JUST BIOFIBER STRUCTURAL SOLUTIONS CORP. IS PROHIBITED. PROTECTED BY MULTIPLE PATENTS.
DO NOT SCALE DRAWING

TITLE:
**CONV. WOOD FRAME
CONST. VS JBF**


SIZE	DWG. NO.	REV
B	JBF-DRW-Manual	
SCALE: 1:10	2016-03-14	SHEET 6 OF 24



JBF HIGH-PERFORMANCE BUILDING SYSTEM
R28



CONVENTIONAL CONCRETE BLOCK CONSTRUCTION
R17

	TITLE: CONC. BLOCK CONST. VS JBF		
	SIZE B	DWG. NO. JBF-DRW-Manual	REV
PROPRIETARY AND CONFIDENTIAL THE INFORMATION CONTAINED IN THIS DRAWING IS THE SOLE PROPERTY OF JUST BIOFIBER STRUCTURAL SOLUTIONS CORP. ANY REPRODUCTION IN PART OR AS A WHOLE WITHOUT THE WRITTEN PERMISSION OF JUST BIOFIBER STRUCTURAL SOLUTIONS CORP. IS PROHIBITED. PROTECTED BY MULTIPLE PATENTS. DO NOT SCALE DRAWING	SCALE: 1:10 2016-03-14 SHEET 7 OF 24		

4

3

2

1

NOTE: ALL BLOCKS ARE TO BE JOINED TOGETHER BY JBF LIME ADHESIVE. THE STRUCTURAL FRAMES ARE ADHERED TOGETHER (OR TO STARTER STRIPS WHERE PRESENT) BY A DIFFERENT SUPPLIED ADHESIVE.

STEP 7: STRUTS OF TOP ROW OF BLOCKS ARE CUT FLUSH WITH THE TOP OF THE BLOCK

STEP 6: REAMINDER OF BLOCKS ARE INSTALLED

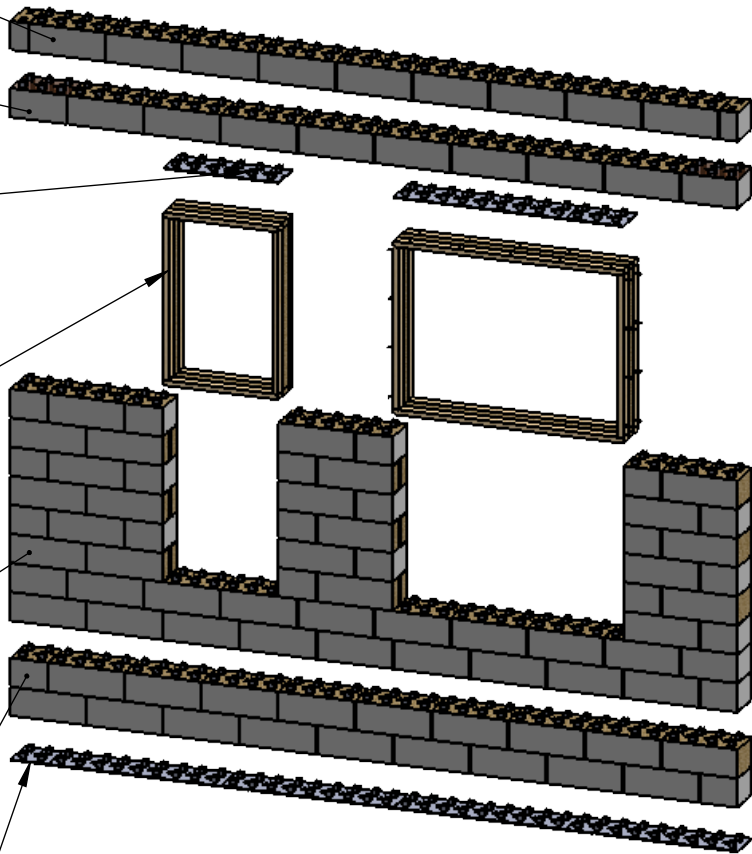
STEP 5: STARTER STRIPS ARE SCREWED TO FRAMING BELOW

STEP 4: WINDOW/DOOR FRAMING IS INSTALLED AS PER FRAMING DETAILS (SHEETS 9 & 10)

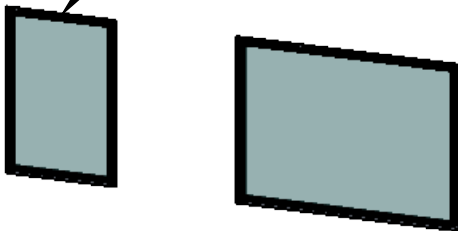
STEP 3: BLOCKS ARE INSTALLED UP TO HEIGHT OF ANY OPENINGS IN WALL

STEP 2: ONCE SECOND COURSE OF BLOCKS IS INSTALLED, DADO CUTS ARE MADE AND HORIZONTAL WIRING IS INSTALLED IF REQUIRED (SHEET 12)

STEP 1: APPLY ADHESIVE TO STARTER STRIP AS BLOCKS ARE PLACED



STEP 8: INSTALL WINDOWS



JUST BIOFIBER STRUCTURAL SOLUTIONS CORP.

PROPRIETARY AND CONFIDENTIAL
THE INFORMATION CONTAINED IN THIS DRAWING IS THE SOLE PROPERTY OF JUST BIOFIBER STRUCTURAL SOLUTIONS CORP. ANY REPRODUCTION IN PART OR AS A WHOLE WITHOUT THE WRITTEN PERMISSION OF JUST BIOFIBER STRUCTURAL SOLUTIONS CORP. IS PROHIBITED. PROTECTED BY MULTIPLE PATENTS.

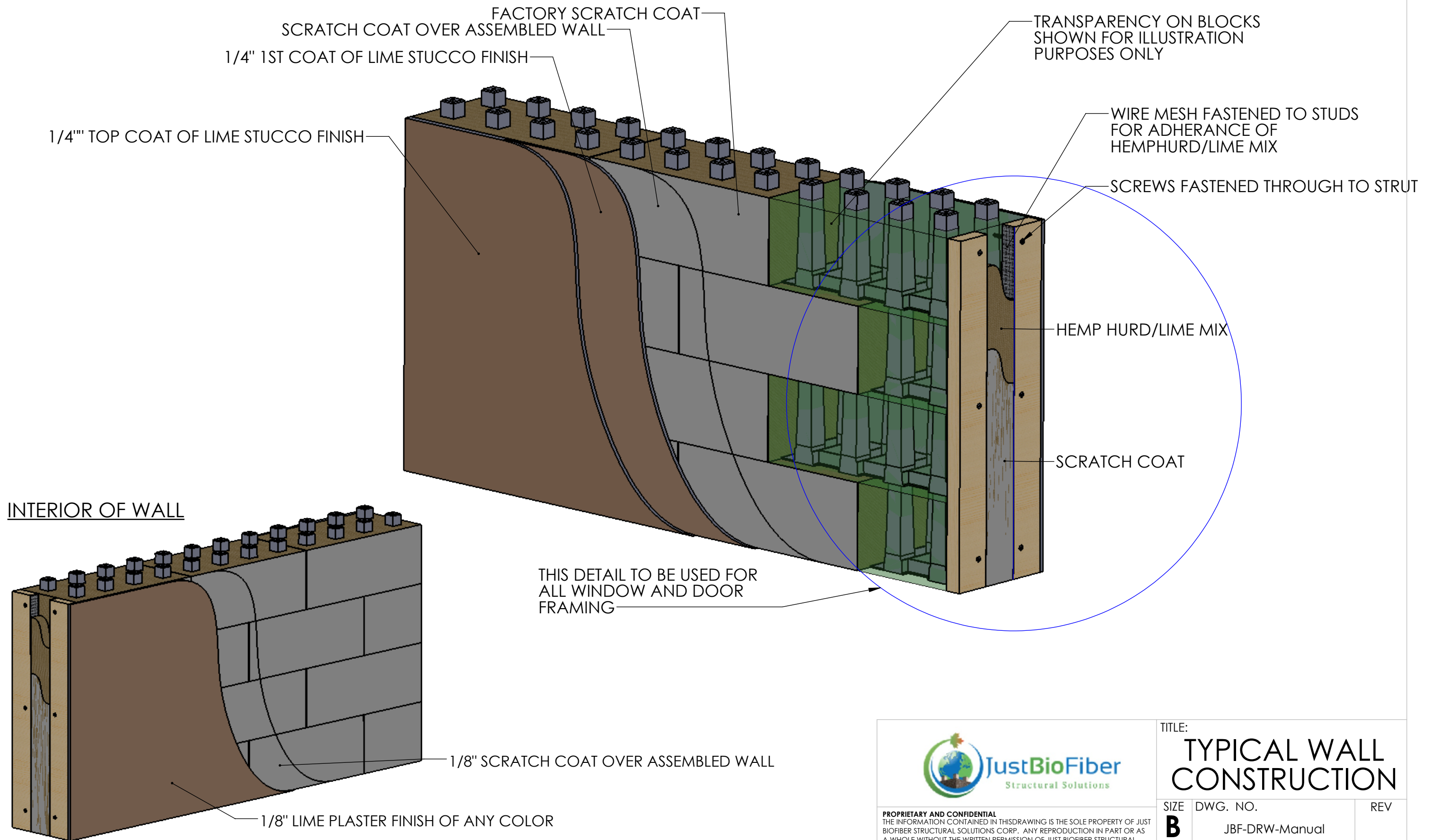
DO NOT SCALE DRAWING

	NAME	DATE
DRAWN		
CHECKED		
ENG APPR.		
MFG APPR.		
COMMENTS:		

TITLE: **WALL CONSTRUCTION DETAILS**

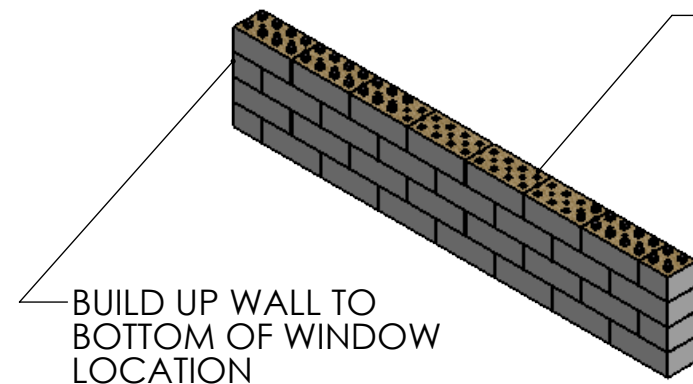
SIZE B	DWG. NO. JBF-DRW-Manual	REV
------------------	----------------------------	-----

SCALE: 1:50	WEIGHT:	SHEET 8 OF 24
-------------	---------	---------------

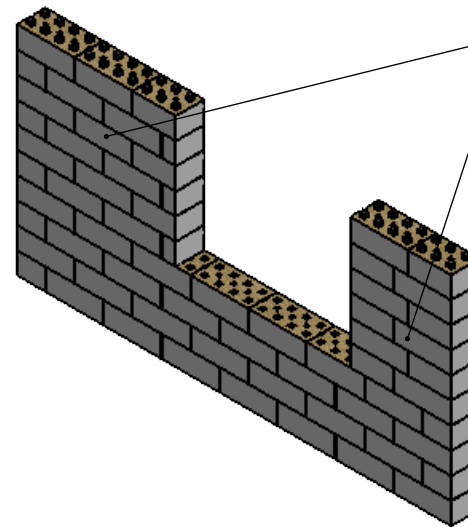


PROPRIETARY AND CONFIDENTIAL
 THE INFORMATION CONTAINED IN THIS DRAWING IS THE SOLE PROPERTY OF JUST BIOFIBER STRUCTURAL SOLUTIONS CORP. ANY REPRODUCTION IN PART OR AS A WHOLE WITHOUT THE WRITTEN PERMISSION OF JUST BIOFIBER STRUCTURAL SOLUTIONS CORP. IS PROHIBITED. PROTECTED BY MULTIPLE PATENTS. DO NOT SCALE DRAWING

TITLE: TYPICAL WALL CONSTRUCTION		
SIZE B	DWG. NO. JBF-DRW-Manual	REV
SCALE: 1:8	2016-03-14	SHEET 9 OF 24

STEP 1

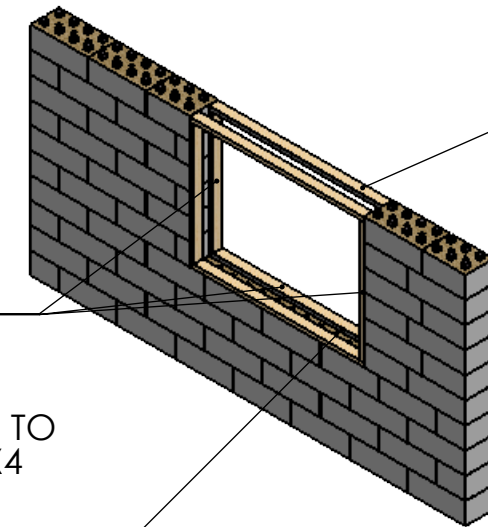
CUT TOP OF STRUTS TO BE FLUSH WITH TOP OF BLOCKS IN THE WINDOW LOCATION

STEP 2

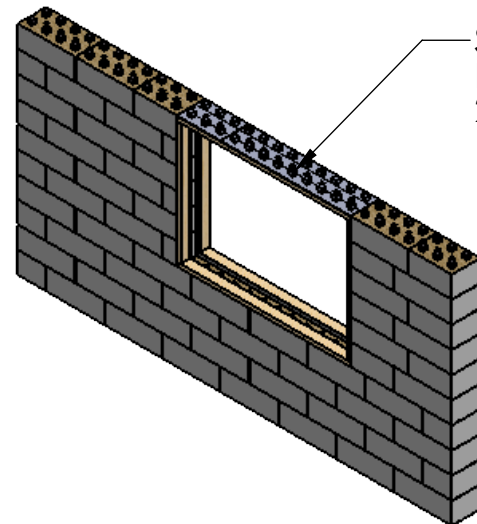
BUILD REMAINDER OF WALL UP TO THE HEIGHT OF THE WINDOW

SCREW 2X4 FRAMING INTO STRUTS SEE DETAIL B ON SHEET 2

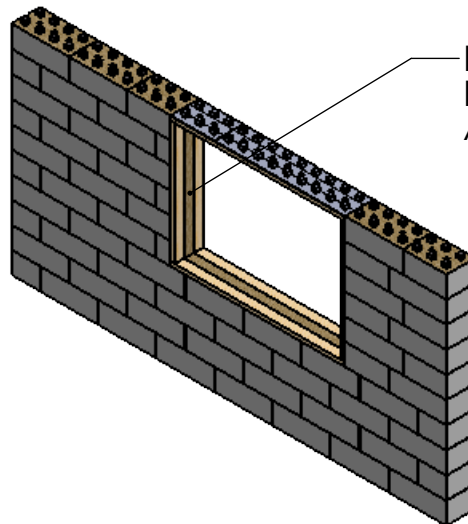
WIRE MESH TO BE FASTENED TO THE INSIDE FACES OF ALL 2X4 FRAMING TO ENSURE ADHESION OF THE HEMP HURD/LIME MIX. SEE SHEET 3

STEP 3

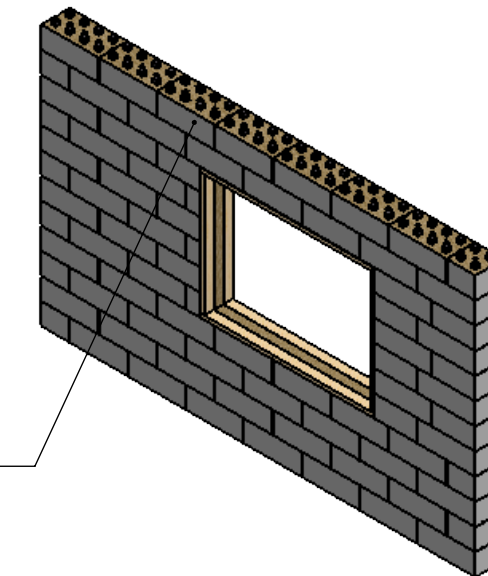
TOP 2X4s TO BE FASTENED TO VERTICAL 2X4s

STEP 4

STARTER STRIPS TO BE FASTENED TO 2X4s BELOW

STEP 5

FILL GAPS WITH HEMP HURD/LIME MIX AND APPLY SCRATCH COAT

STEP 6

BUILD UP REMAINDER OF WALL

NOTE 1:
ALL ADJACENT FACES OF ALL BLOCKS TO BE BONDED TOGETHER WITH LIME ADHESIVE.

ALL STRUTS OF THE STRUCTURAL FRAME IN THE BLOCKS ARE TO BE BONDED WITH THE STRUCTURAL FRAME ABOVE WITH ADHESIVE, FORMING A MONOLITHIC STRUCTURE.

ALL STARTER STRIPS TO BE BONDED TO THE STRUCTURAL FRAMES OF THE BLOCKS ABOVE WITH ADHESIVE.

NOTE 2:
WHENEVER HEMP HURD/LIME MIX IS USED TO FILL AREAS A WIRE MESH IS TO BE FASTENED TO FACE TO ENSURE PROPER ADHESION

NOTE 3:
DOOR FRAMING IS THE SAME, ONLY NO FRAMING ON THE BOTTOM.



PROPRIETARY AND CONFIDENTIAL
THE INFORMATION CONTAINED IN THIS DRAWING IS THE SOLE PROPERTY OF JUST BIOFIBER STRUCTURAL SOLUTIONS CORP. ANY REPRODUCTION IN PART OR AS A WHOLE WITHOUT THE WRITTEN PERMISSION OF JUST BIOFIBER STRUCTURAL SOLUTIONS CORP. IS PROHIBITED. PROTECTED BY MULTIPLE PATENTS.
DO NOT SCALE DRAWING

TITLE:

**WINDOW
FRAMING DETAIL**

SIZE

B

DWG. NO.

JBF-DRW-Manual

REV

SCALE: 1:50

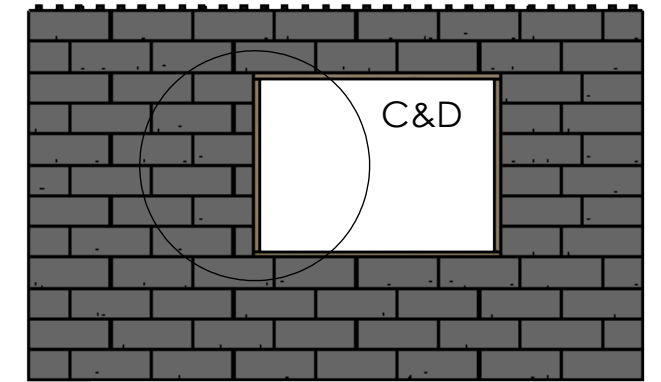
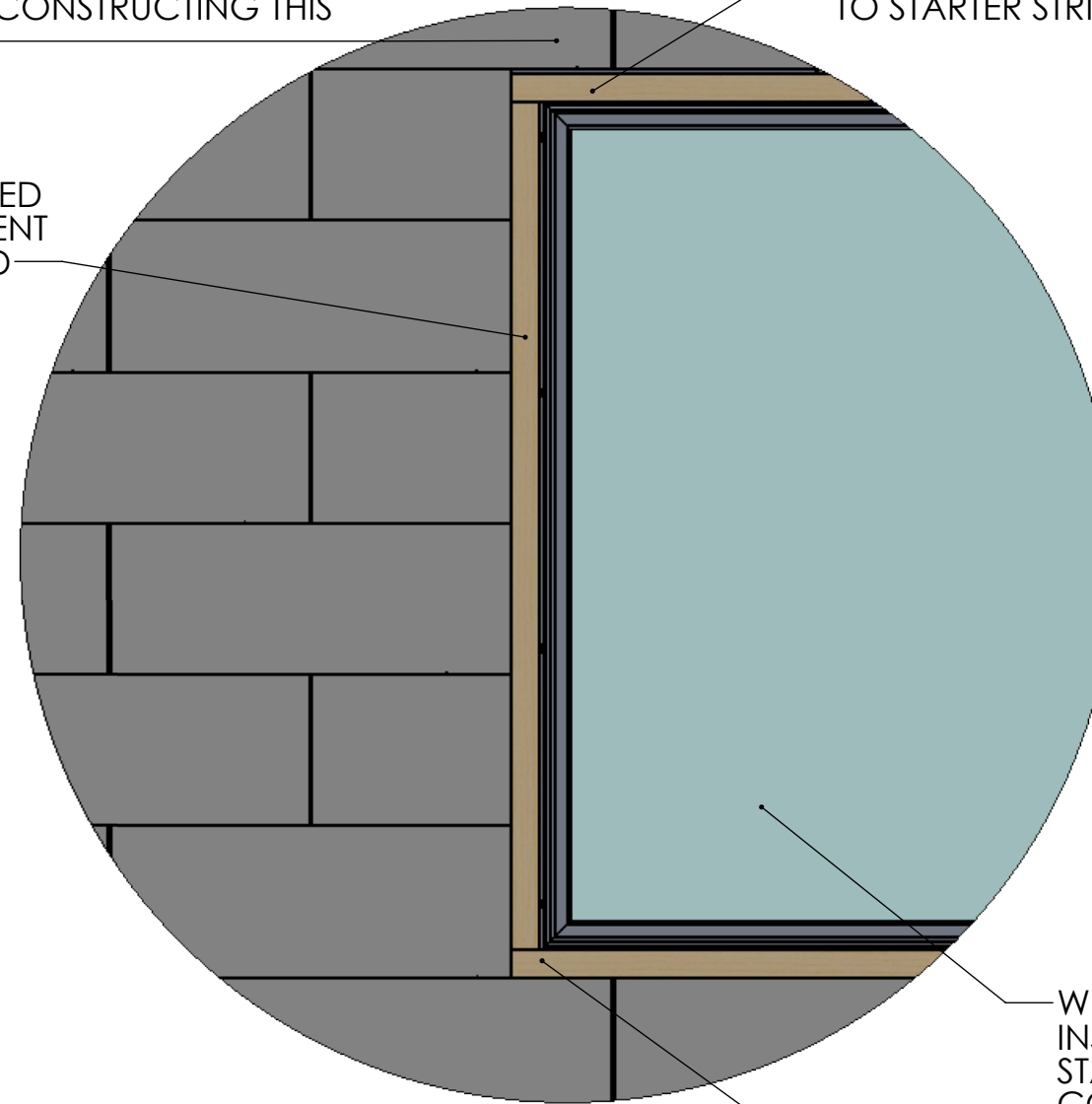
2016-03-14

SHEET 10 OF 24

WINDOW AND DOOR FRAMING TO BE COMPLETED BEFORE CONSTRUCTING THIS ROW OF BLOCKS

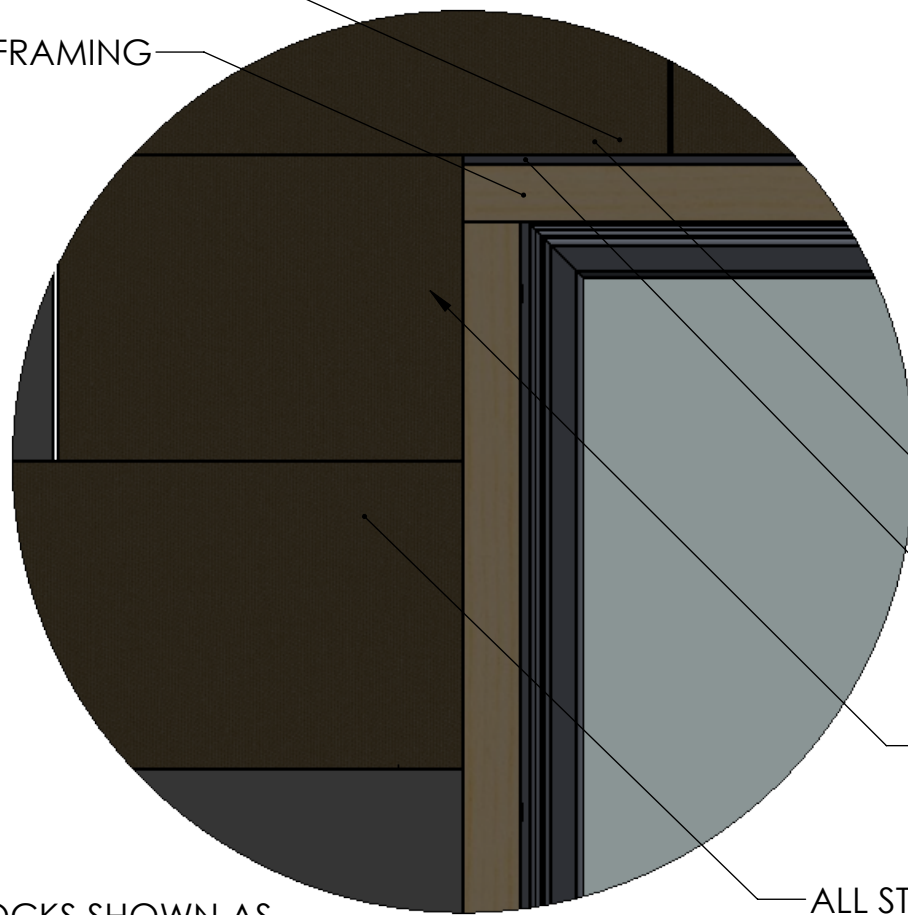
TOP OF 2X4 FRAME IS SCREWED TO STARTER STRIP ABOVE

2X4 FRAME IS SCREWED TO STRUTS IN ADJACENT BLOCKS SEE DETAIL D



SCREWS GO THROUGH 2X4 FRAMING, STARTER STRIP AND STRUCTURAL FRAME OF BLOCK ABOVE

2X4 FRAMING



BLOCKS SHOWN AS TRANSPARENT FOR ILLUSTRATION PURPOSES ONLY

DETAIL B
SCALE 1 : 5

STRUCTURAL FRAME IN BLOCK

STARTER STRIP

2X4 FRAME IS SCREWED TO STRUTS IN ADJACENT BLOCKS

ALL STRUTS OF THE STRUCTURAL FRAME IN THE BLOCKS ARE TO BE BONDED WITH THE STRUCTURAL FRAME ABOVE WITH ADHESIVE

DETAIL A
SCALE 1 : 10

WINDOWS INSTALLED AS PER STANDARD CONSTRUCTION

BASE OF 2X4 FRAME IS SCREWED TO STRUTS BELOW



PROPRIETARY AND CONFIDENTIAL
THE INFORMATION CONTAINED IN THIS DRAWING IS THE SOLE PROPERTY OF JUST BIOFIBER STRUCTURAL SOLUTIONS CORP. ANY REPRODUCTION IN PART OR AS A WHOLE WITHOUT THE WRITTEN PERMISSION OF JUST BIOFIBER STRUCTURAL SOLUTIONS CORP. IS PROHIBITED. PROTECTED BY MULTIPLE PATENTS.
DO NOT SCALE DRAWING

TITLE:

**WINDOW
FRAMING DETAIL**

SIZE

B

DWG. NO.

JBF-DRW-Manual

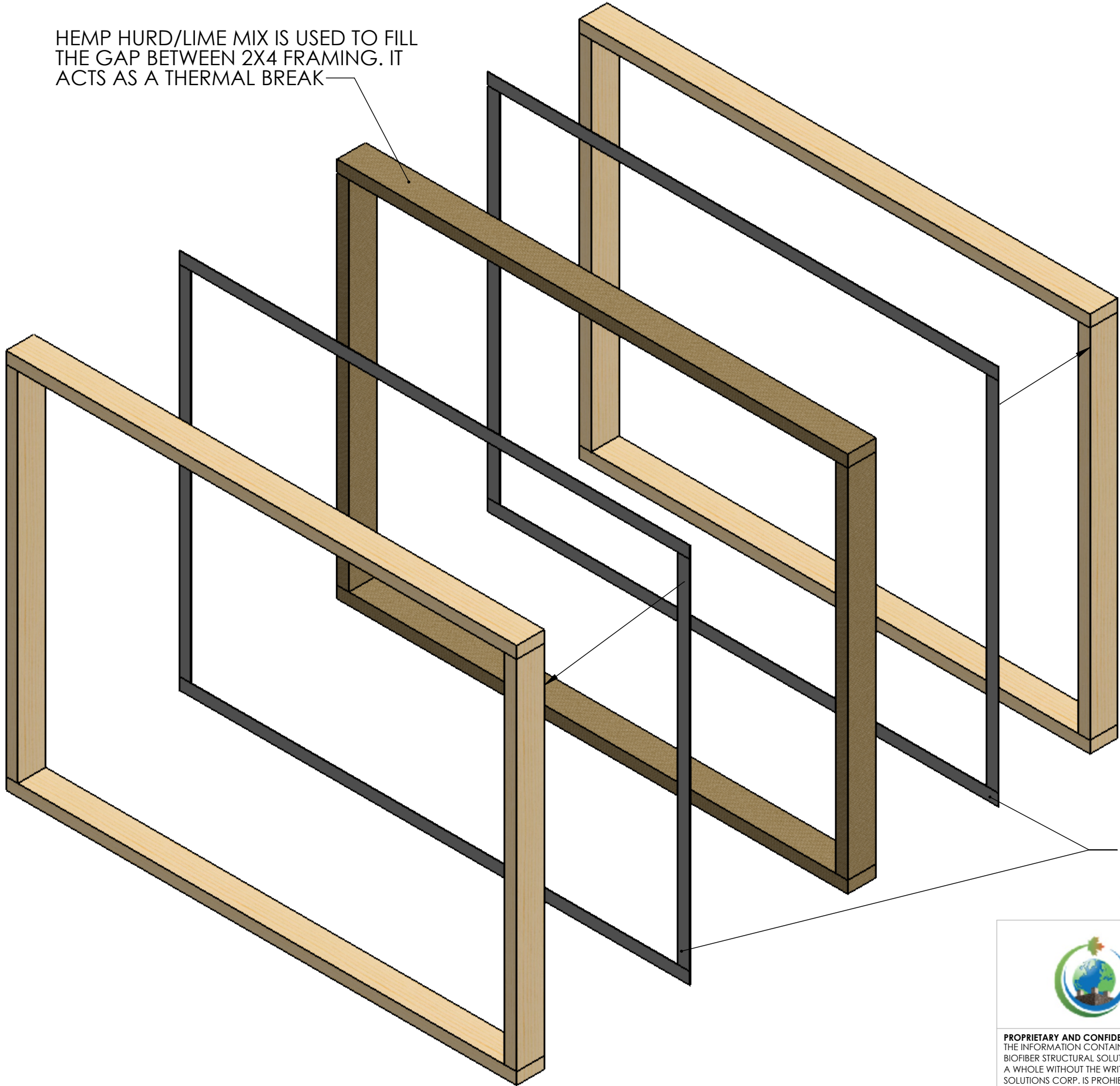
REV

SCALE: 1:50

2016-03-14

SHEET 11 OF 24

HEMP HURD/LIME MIX IS USED TO FILL THE GAP BETWEEN 2X4 FRAMING. IT ACTS AS A THERMAL BREAK



WIRE MESH TO BE FASTENED TO 2X4s BEFORE HEMP HURD/LIME MIX IS ADDED. THIS ENSURES PROPER ADHESION OF THE HEM HURD/LIME MIX

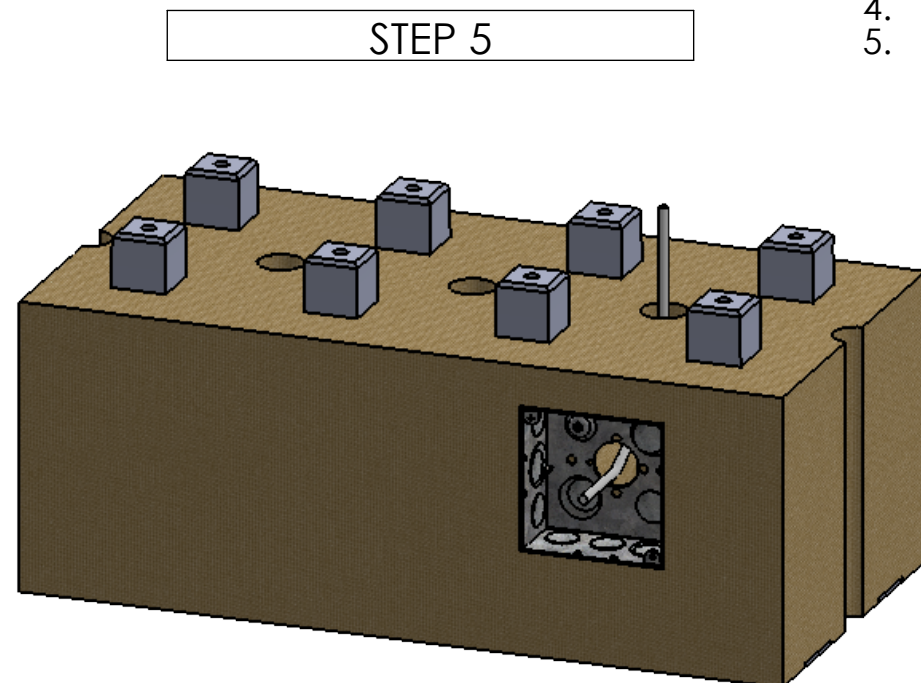
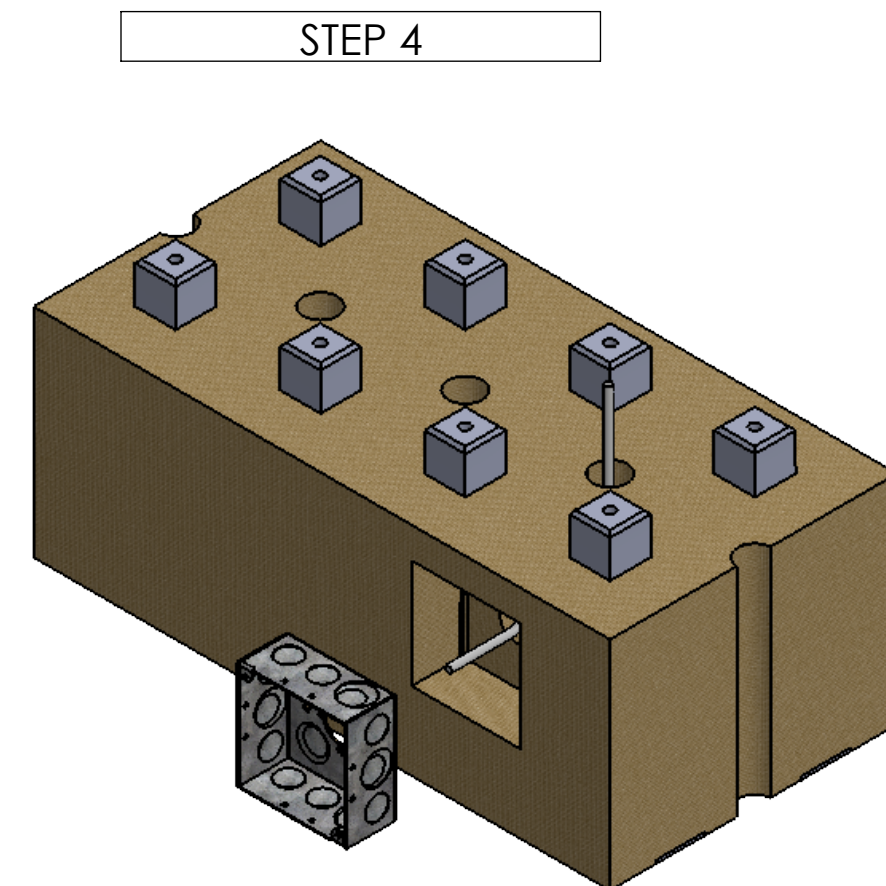
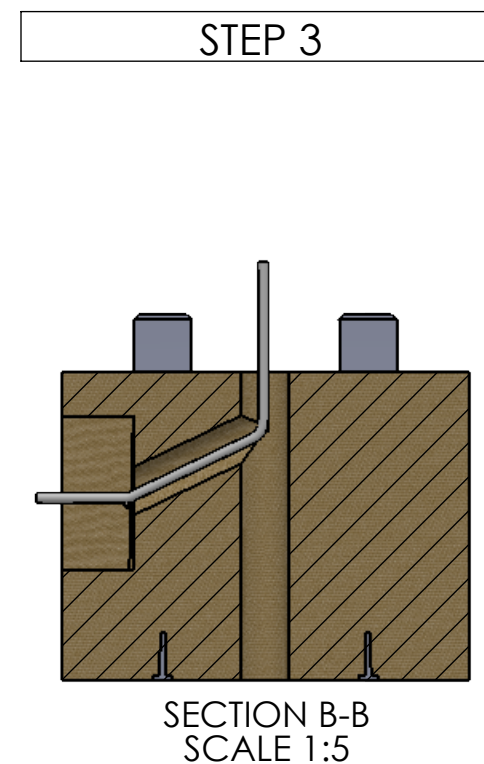
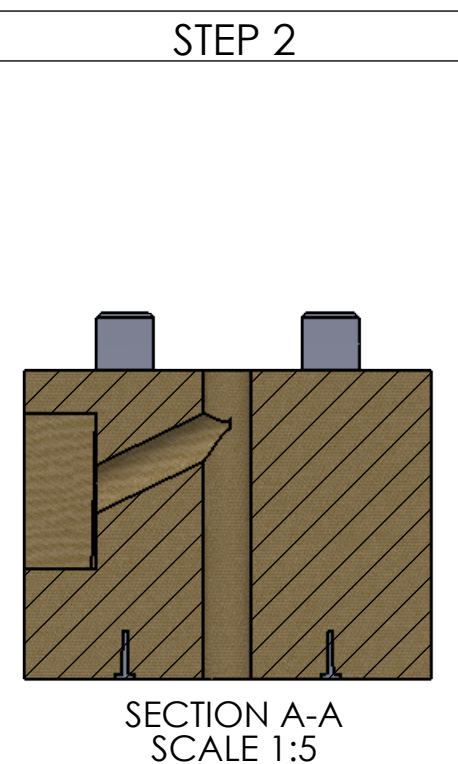
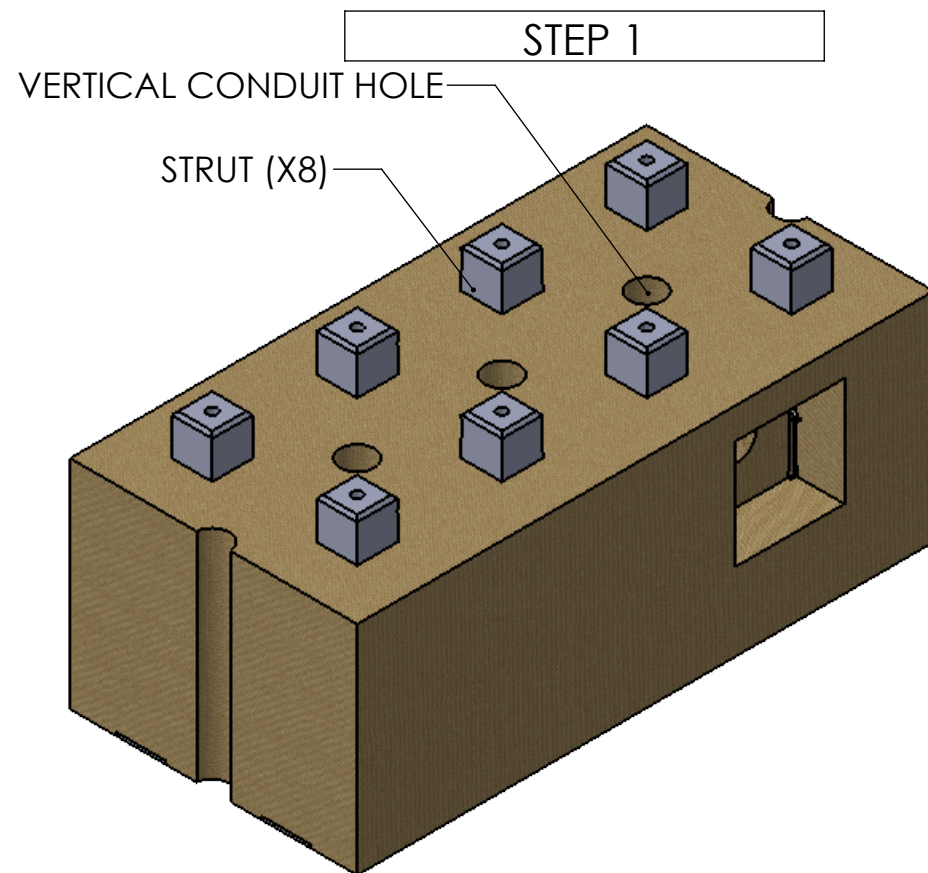


PROPRIETARY AND CONFIDENTIAL
THE INFORMATION CONTAINED IN THIS DRAWING IS THE SOLE PROPERTY OF JUST BIOFIBER STRUCTURAL SOLUTIONS CORP. ANY REPRODUCTION IN PART OR AS A WHOLE WITHOUT THE WRITTEN PERMISSION OF JUST BIOFIBER STRUCTURAL SOLUTIONS CORP. IS PROHIBITED. PROTECTED BY MULTIPLE PATENTS.
DO NOT SCALE DRAWING

TITLE:

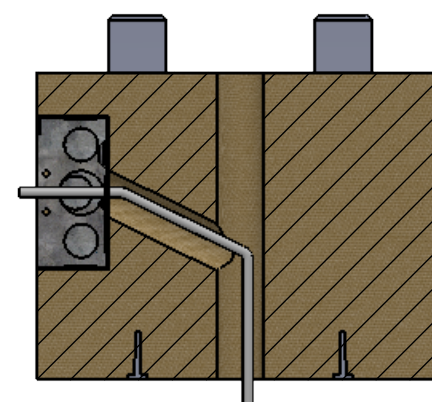
FRAMING
DETAILS

SIZE	DWG. NO.	REV
B	JBF-DRW-Manual	
SCALE: 1:10	2016-03-14	SHEET 12 OF 24

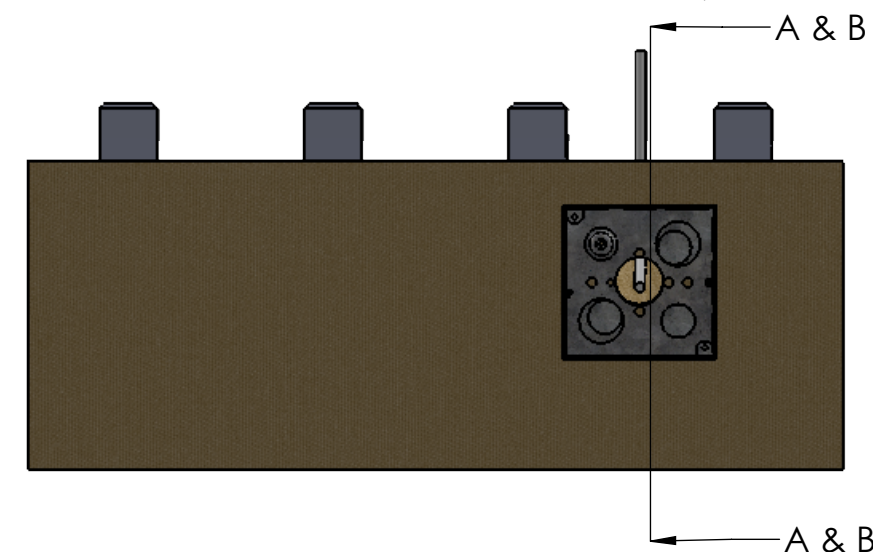


ELECTRICAL BOX INSTALLATION PROCEDURES

1. USING A PLUNGE ROUTER CUT OUT 4X4X1 7/8" SECTION OF THE BLOCK
2. DRILL A 1 1/4" HOLE FROM ELECTRICAL BOX AT CUT OUT AT AN UPWARD ANGLE TO CONNECT WITH THE VERTICAL CONDUIT HOLE.
3. FISH CABLES THROUGH HOLES.
4. INSERT ELECTRICAL BOX
5. SCREW ELECTRICAL BOX TO STRUTS(WILL BE AT AN ANGLE)WITH SELF TAPPING SCREWS



STEP 2 & 3:
A DOWNWARD ANGLE IS
CUT IF THE WIRING IS BEING
FED TO THE FLOOR BELOW

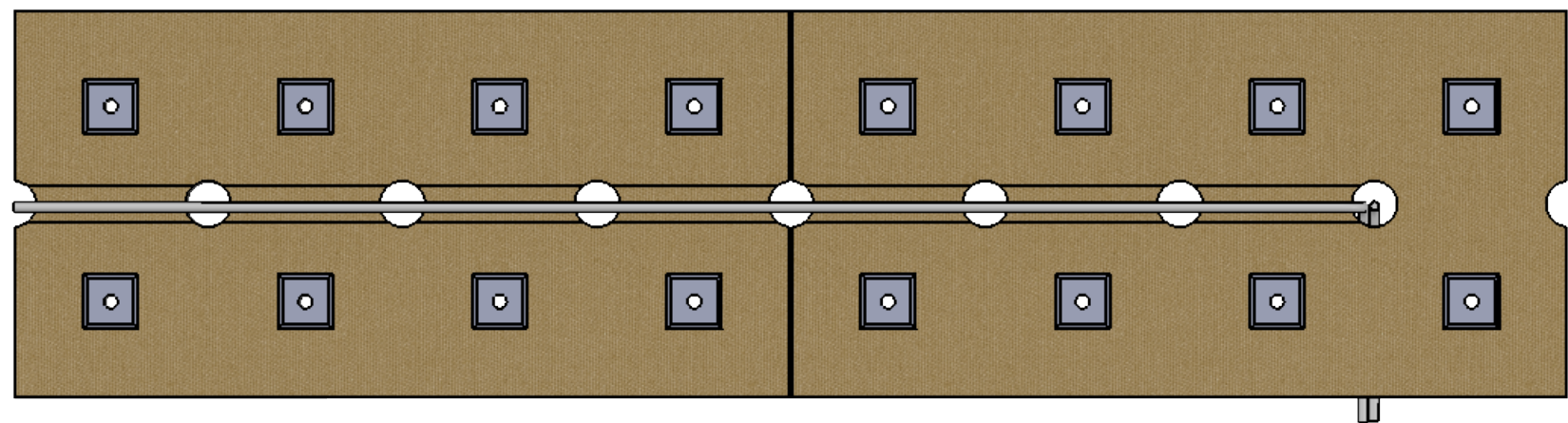
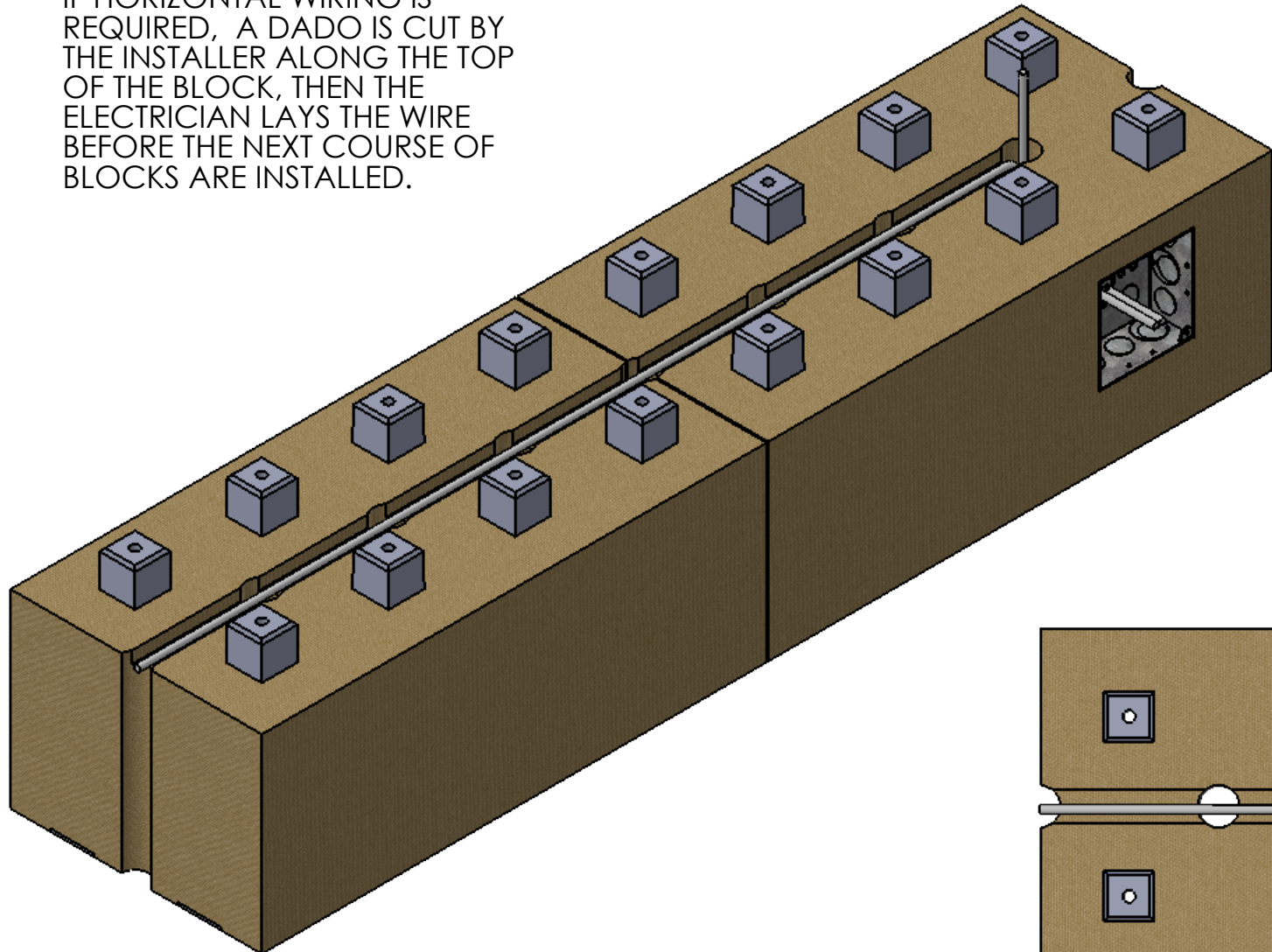


PROPRIETARY AND CONFIDENTIAL
THE INFORMATION CONTAINED IN THIS DRAWING IS THE SOLE PROPERTY OF JUST
BIOFIBER STRUCTURAL SOLUTIONS CORP. ANY REPRODUCTION IN PART OR AS
A WHOLE WITHOUT THE WRITTEN PERMISSION OF JUST BIOFIBER STRUCTURAL
SOLUTIONS CORP. IS PROHIBITED. PROTECTED BY MULTIPLE PATENTS.
DO NOT SCALE DRAWING

TITLE:
**ELEC. WIRING
DETAIL**

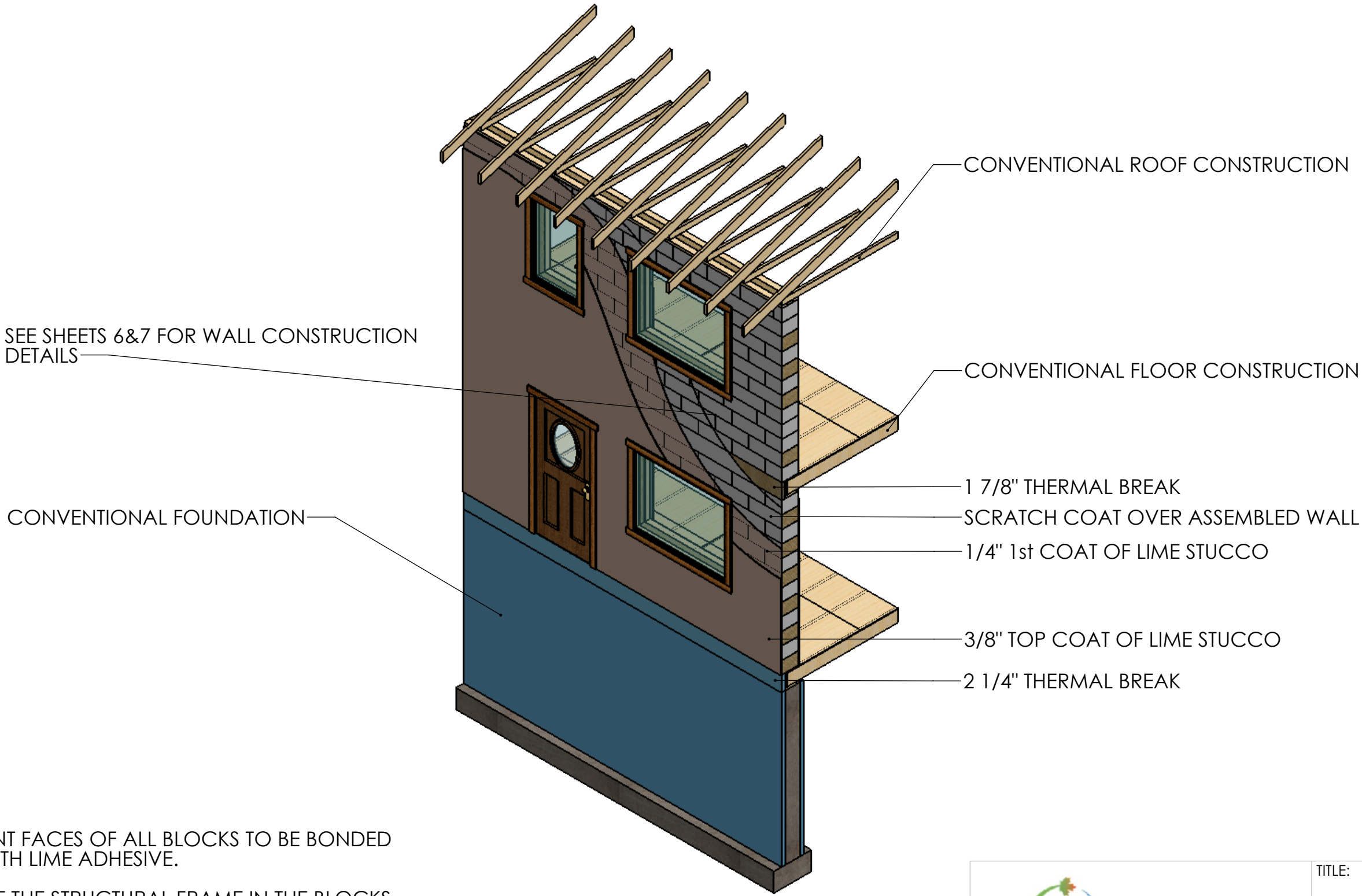
SIZE	DWG. NO.	REV
B	JBF-DRW-Manual	
SCALE: 1:5	2016-03-14	SHEET 13 OF 24

IF HORIZONTAL WIRING IS
REQUIRED, A DADO IS CUT BY
THE INSTALLER ALONG THE TOP
OF THE BLOCK, THEN THE
ELECTRICIAN LAYS THE WIRE
BEFORE THE NEXT COURSE OF
BLOCKS ARE INSTALLED.



PROPRIETARY AND CONFIDENTIAL
THE INFORMATION CONTAINED IN THIS DRAWING IS THE SOLE PROPERTY OF JUST
BIOFIBER STRUCTURAL SOLUTIONS CORP. ANY REPRODUCTION IN PART OR AS
A WHOLE WITHOUT THE WRITTEN PERMISSION OF JUST BIOFIBER STRUCTURAL
SOLUTIONS CORP. IS PROHIBITED. PROTECTED BY MULTIPLE PATENTS.
DO NOT SCALE DRAWING

TITLE: ELEC. WIRING DETAIL		
SIZE B	DWG. NO. JBF-DRW-Manual	REV
SCALE: 1:10	2016-03-14	SHEET 14 OF 24



ALL ADJACENT FACES OF ALL BLOCKS TO BE BONDED TOGETHER WITH LIME ADHESIVE.

ALL STRUTS OF THE STRUCTURAL FRAME IN THE BLOCKS ARE TO BE BONDED WITH THE STRUCTURAL FRAME ABOVE WITH ADHESIVE FORMING A MONOLITHIC STRUCTURE.

ALL STARTER STRIPS TO BE BONDED WITH THE STRUCTURAL FRAMES OF THE BLOCKS ABOVE WITH ADHESIVE.

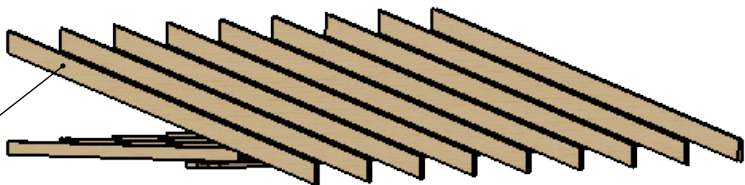


PROPRIETARY AND CONFIDENTIAL
THE INFORMATION CONTAINED IN THIS DRAWING IS THE SOLE PROPERTY OF JUST BIOFIBER STRUCTURAL SOLUTIONS CORP. ANY REPRODUCTION IN PART OR AS A WHOLE WITHOUT THE WRITTEN PERMISSION OF JUST BIOFIBER STRUCTURAL SOLUTIONS CORP. IS PROHIBITED. PROTECTED BY MULTIPLE PATENTS.
DO NOT SCALE DRAWING

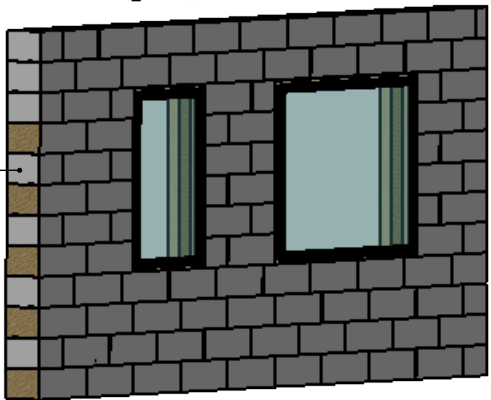
TITLE:
**RESIDENTIAL
CONSTRUCTION**

SIZE	DWG. NO.	REV
B	JBF-DRW-Manual	
SCALE: 1:50	2016-03-14	SHEET 15 OF 24

STEP 8: CONSTRUCT ROOF
USING CONVENTIONAL
CONSTRUCTION



STEP 7: CONSTRUCT WALL AS PER
WALL CONSTRUCTION DETAIL
(SHEETS 6&7)



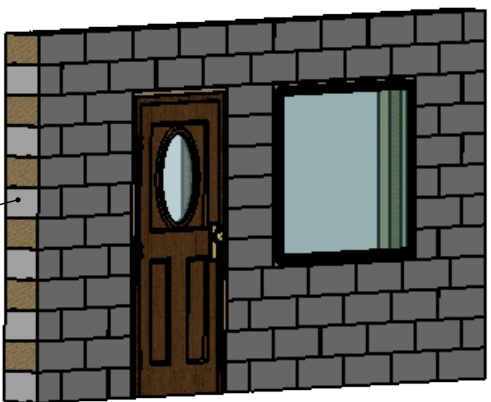
STEP 6: INSTALL STRARTER
STRIPS. SCREW TO FLOOR
CONSTRUCTION BELOW.



STEP 5: CONSTRUCT FLOOR
USING CONVENTIONAL
CONSTRUCTION



STEP 4: CONSTRUCT WALL AS PER
WALL CONSTRUCTION DETAIL
(SHEETS 6&7)



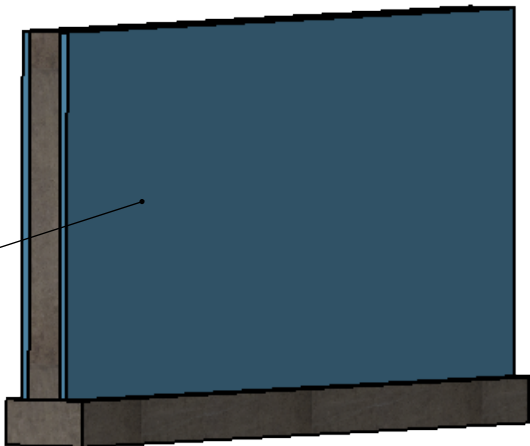
STEP 3: INSTALL STRARTER
STRIPS. SCREW TO FLOOR
CONSTRUCTION BELOW.



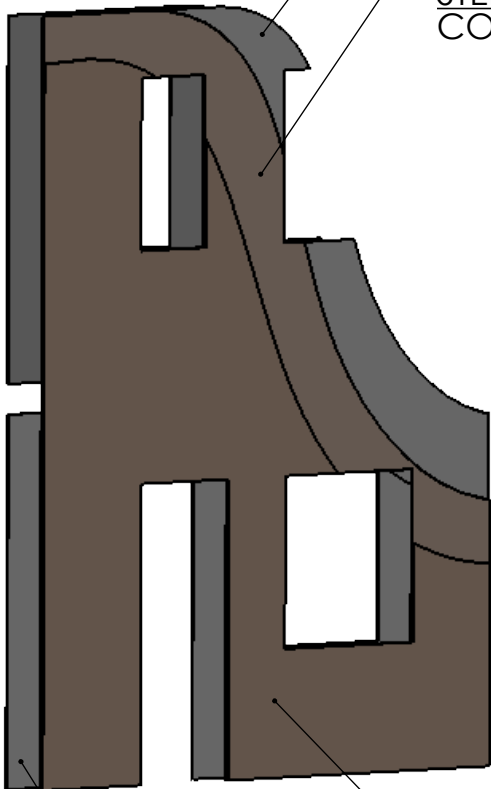
STEP 2: CONSTRUCT
FLOOR USING
CONVENTIONAL
CONSTRUCTION



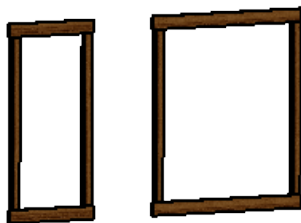
STEP 1: CONSTRUCT THE
FOUNDATION OF CLIENT'S
CHOOSING



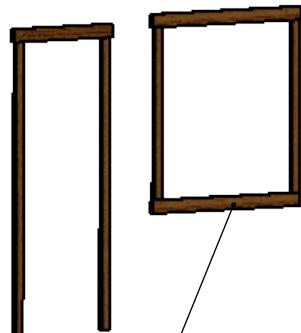
STEP 9: APPLY SCRATCH COAT



STEP 10: APPLY FIRST
COAT OF LIME STUCCO



STEP 11: APPLY FINAL
COAT OF LIME STUCCO
- IN ANY COLOR
REQUESTED



STEP 12: INSTALL
EXTERIOR WINDOW AND
DOOR CASING

STEP 13: APPLY INTERIOR FINISHES (SCRATCH COAT AND 1
COAT OF LIME PLASTER OF ANY COLOR)

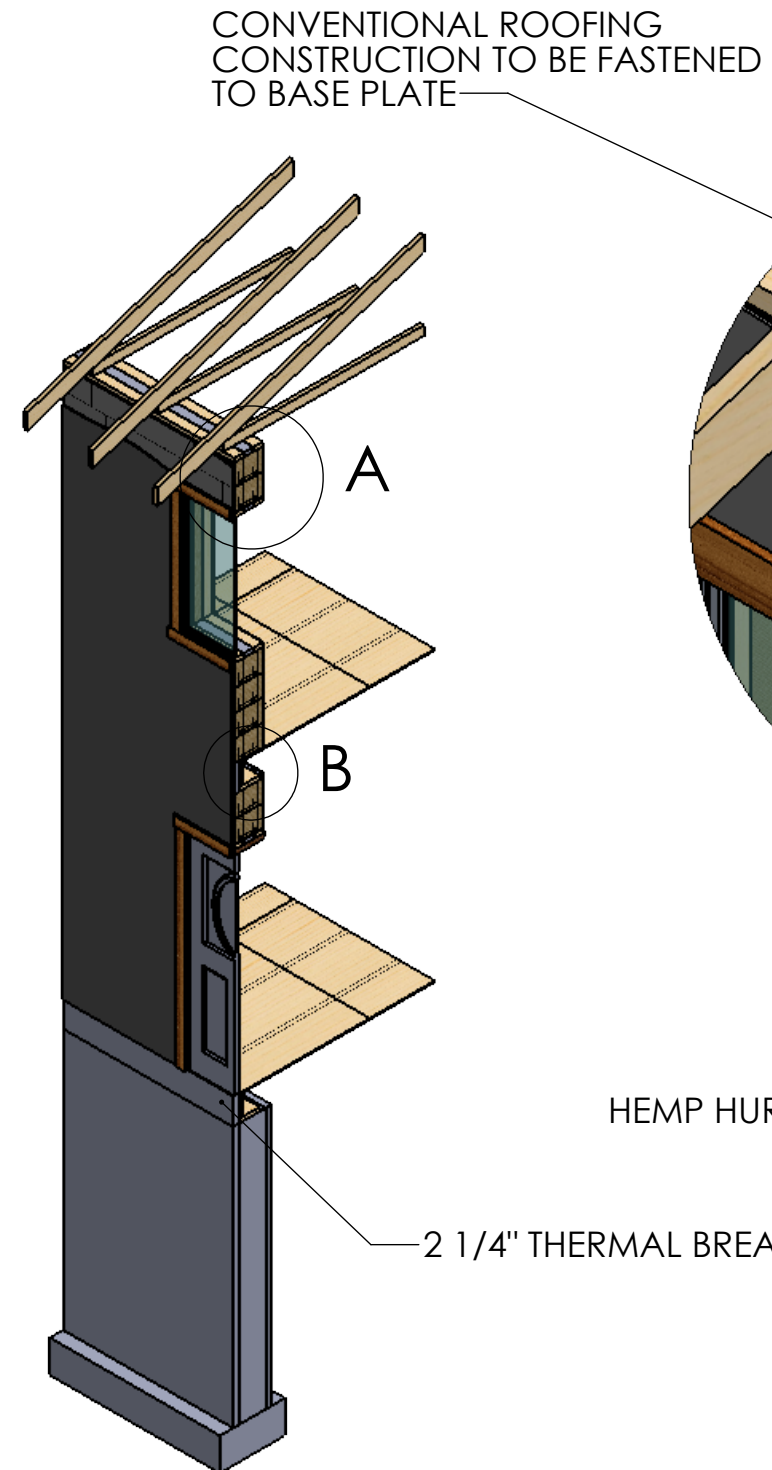


PROPRIETARY AND CONFIDENTIAL
THE INFORMATION CONTAINED IN THIS DRAWING IS THE SOLE PROPERTY OF JUST
BIOFIBER STRUCTURAL SOLUTIONS CORP. ANY REPRODUCTION IN PART OR AS
A WHOLE WITHOUT THE WRITTEN PERMISSION OF JUST BIOFIBER STRUCTURAL
SOLUTIONS CORP. IS PROHIBITED. PROTECTED BY MULTIPLE PATENTS.
DO NOT SCALE DRAWING

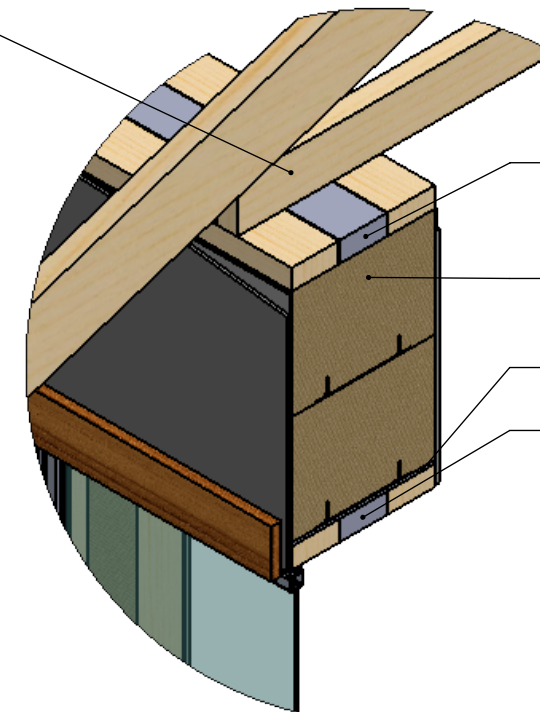
TITLE:
**TYPICAL WALL
CONSTRUCTION**

SIZE	DWG. NO.	REV
B	JBF-DRW-Manual	

SCALE: 1:100 2016-03-14 SHEET 16 OF 24



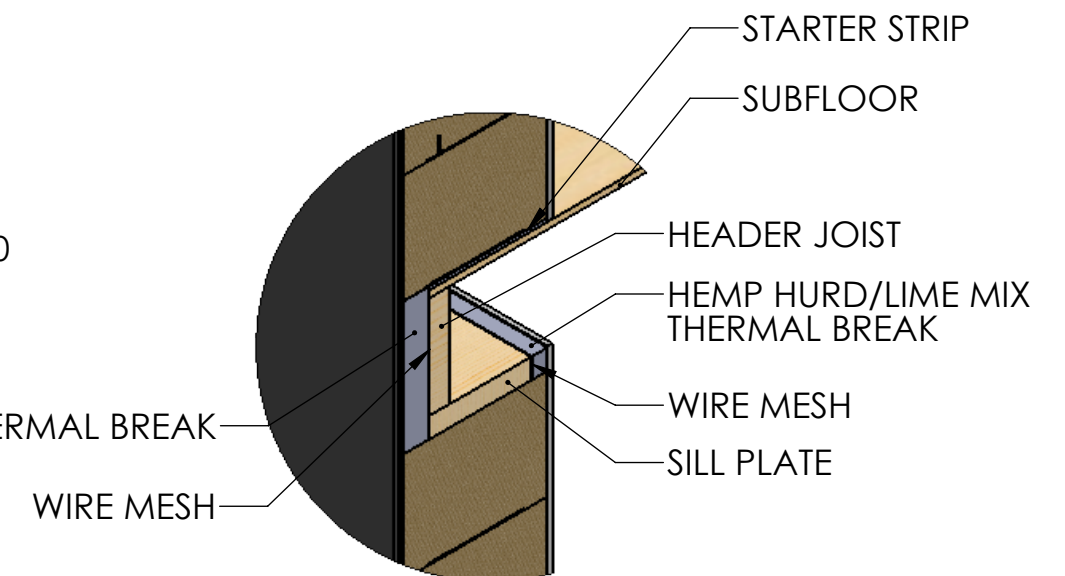
SECTION A-A
SCALE 1 : 50



DETAIL A
SCALE 1 : 10

NOTE: WHENEVER HEMP HURD/LIME MIX IS USED TO FILL AREAS A WIRE MESH IS TO BE FASTENED TO FACE TO ENSURE PROPER ADHESION

HEMP HURD/LIME MIX THERMAL BREAK
BLOCK STRUTS TO BE CUT FLUSH WITH TOP OF BLOCKS
STARTER STRIP
HEMP HURD/LIME MIX THERMAL BREAK



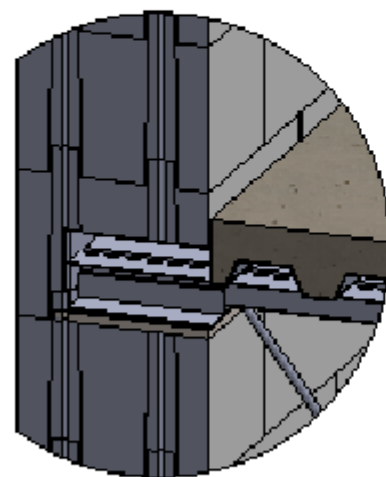
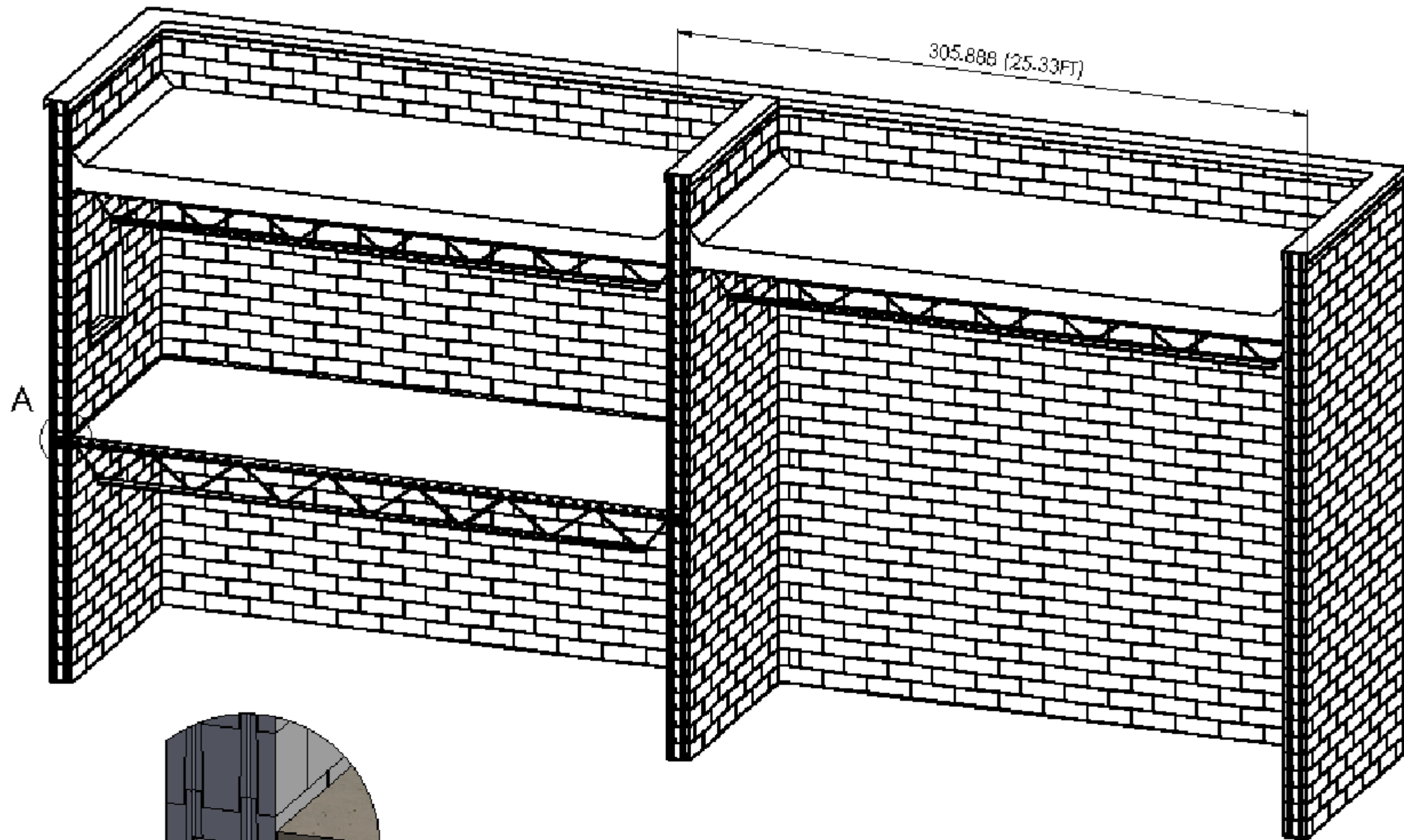
DETAIL B
SCALE 1 : 10



PROPRIETARY AND CONFIDENTIAL
THE INFORMATION CONTAINED IN THIS DRAWING IS THE SOLE PROPERTY OF JUST BIOFIBER STRUCTURAL SOLUTIONS CORP. ANY REPRODUCTION IN PART OR AS A WHOLE WITHOUT THE WRITTEN PERMISSION OF JUST BIOFIBER STRUCTURAL SOLUTIONS CORP. IS PROHIBITED. PROTECTED BY MULTIPLE PATENTS.
DO NOT SCALE DRAWING

TITLE:
**RES. CONST.
DETAILS**

SIZE	DWG. NO.	REV
B	JBF-DRW-Manual	
SCALE: 1:50	2016-03-14	SHEET 17 OF 24

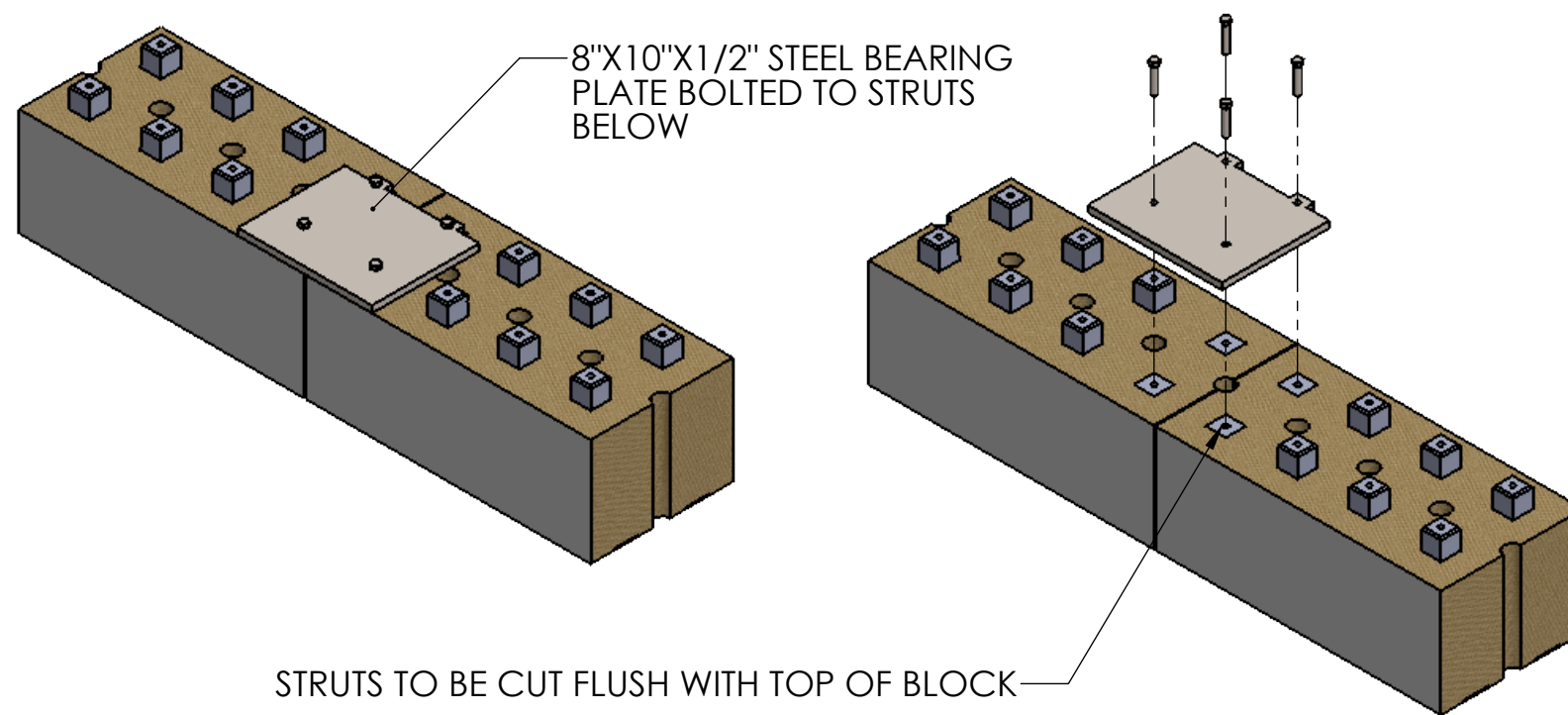


SEE JOIST LOCATION
DETAILS FOR MORE
INFO.

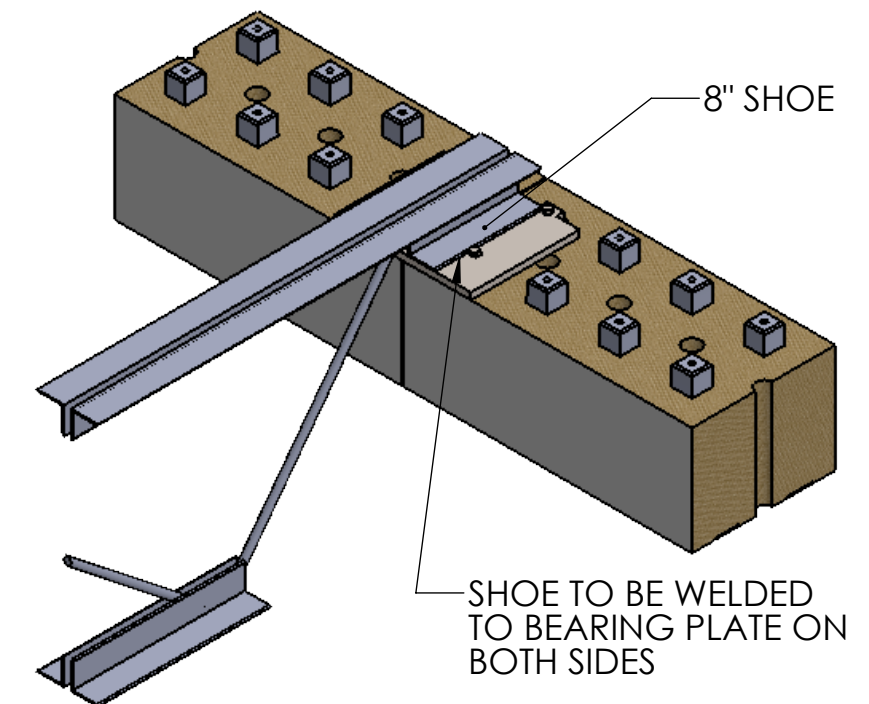
THIS IS A 10' SECTION OF A 100' LONG
WAREHOUSE. IT IS 50.66' WIDE

PROPRIETARY AND CONFIDENTIAL
THE INFORMATION CONTAINED IN THIS DRAWING IS THE SOLE PROPERTY OF JUST
BIOFIBER STRUCTURAL SOLUTIONS CORP. ANY REPRODUCTION IN PART OR AS
A WHOLE WITHOUT THE WRITTEN PERMISSION OF JUST BIOFIBER STRUCTURAL
SOLUTIONS CORP. IS PROHIBITED. PROTECTED BY MULTIPLE PATENTS.
DO NOT SCALE DRAWING

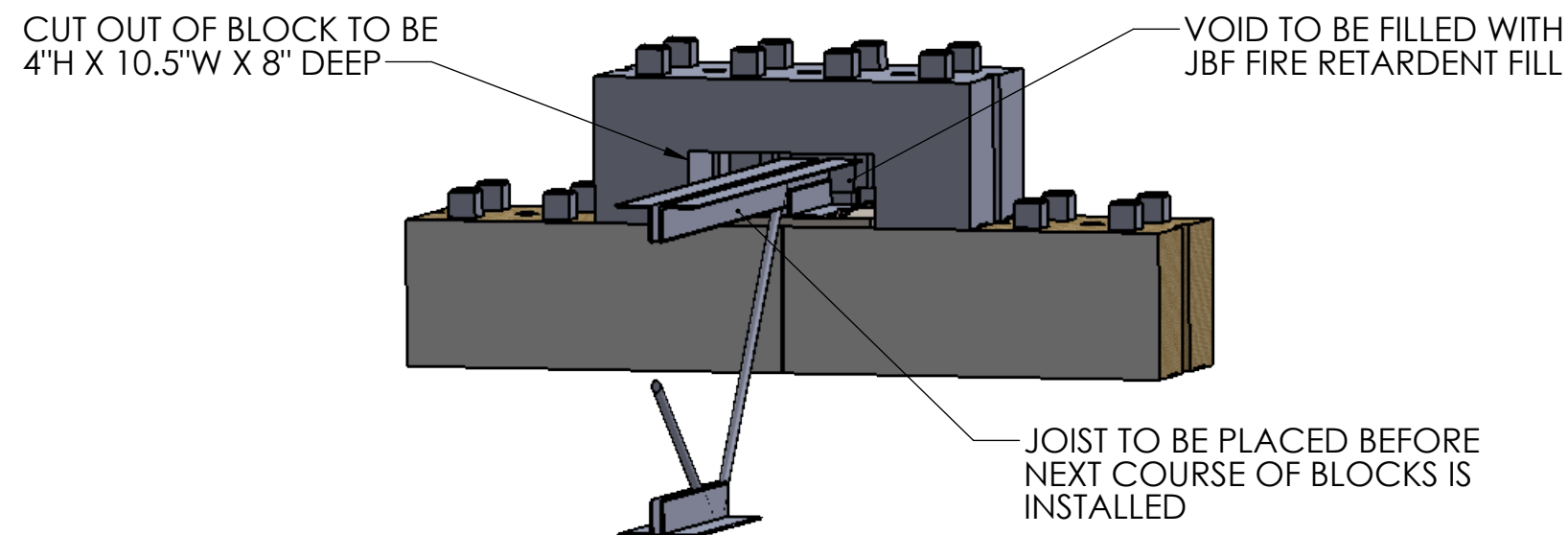
TITLE:		
WAREHOUSE DETAIL		
SIZE	DWG. NO.	REV
B	JBF-DRW-Manual	
SCALE: 1:100	2016-03-14	SHEET 18 OF 24



BEARING PLATE DETAIL



JOIST CONNECTION TO BEARING PLATE



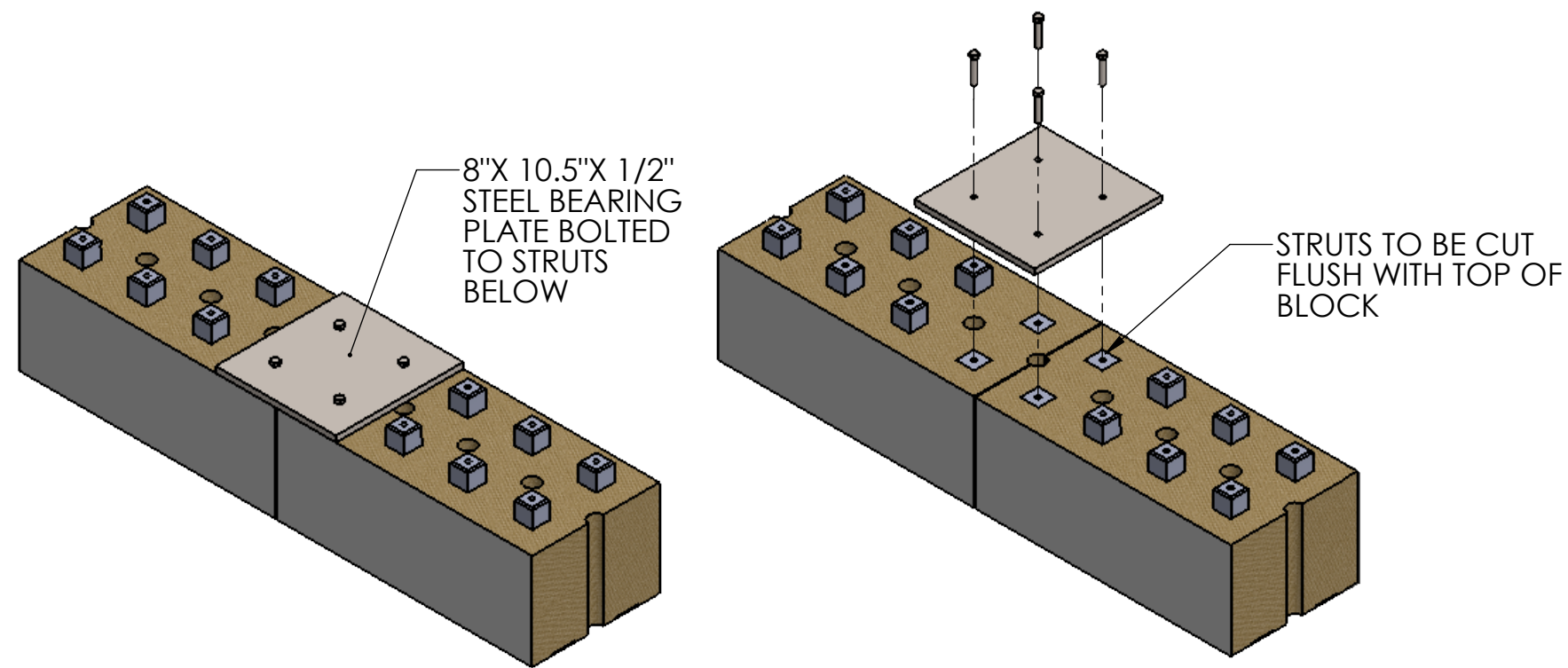
JOIST HOLE DETAIL

THESE ARE CONECTION DETAILS FOR ROOF JOISTS IN THE
EXTERIOR WALLS AND THE FLOOR JOISTS IN BOTH INTERIOR
AND EXTERIOR WALLS

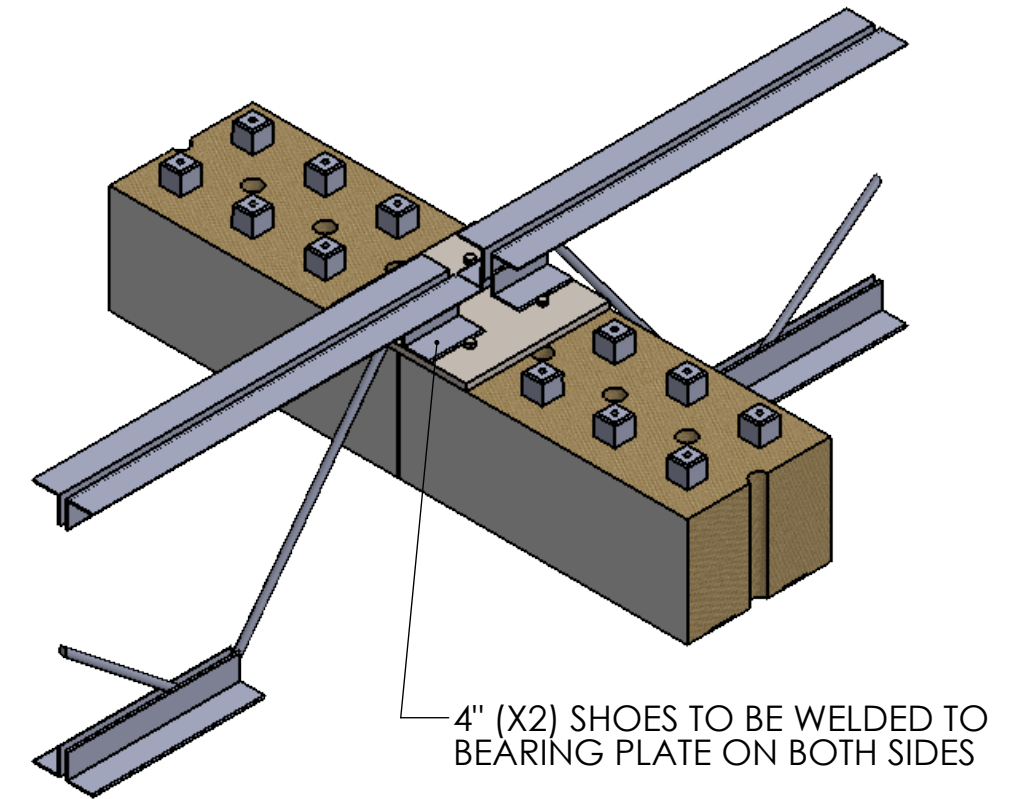


PROPRIETARY AND CONFIDENTIAL
THE INFORMATION CONTAINED IN THIS DRAWING IS THE SOLE PROPERTY OF JUST
BIOFIBER STRUCTURAL SOLUTIONS CORP. ANY REPRODUCTION IN PART OR AS
A WHOLE WITHOUT THE WRITTEN PERMISSION OF JUST BIOFIBER STRUCTURAL
SOLUTIONS CORP. IS PROHIBITED. PROTECTED BY MULTIPLE PATENTS.
DO NOT SCALE DRAWING

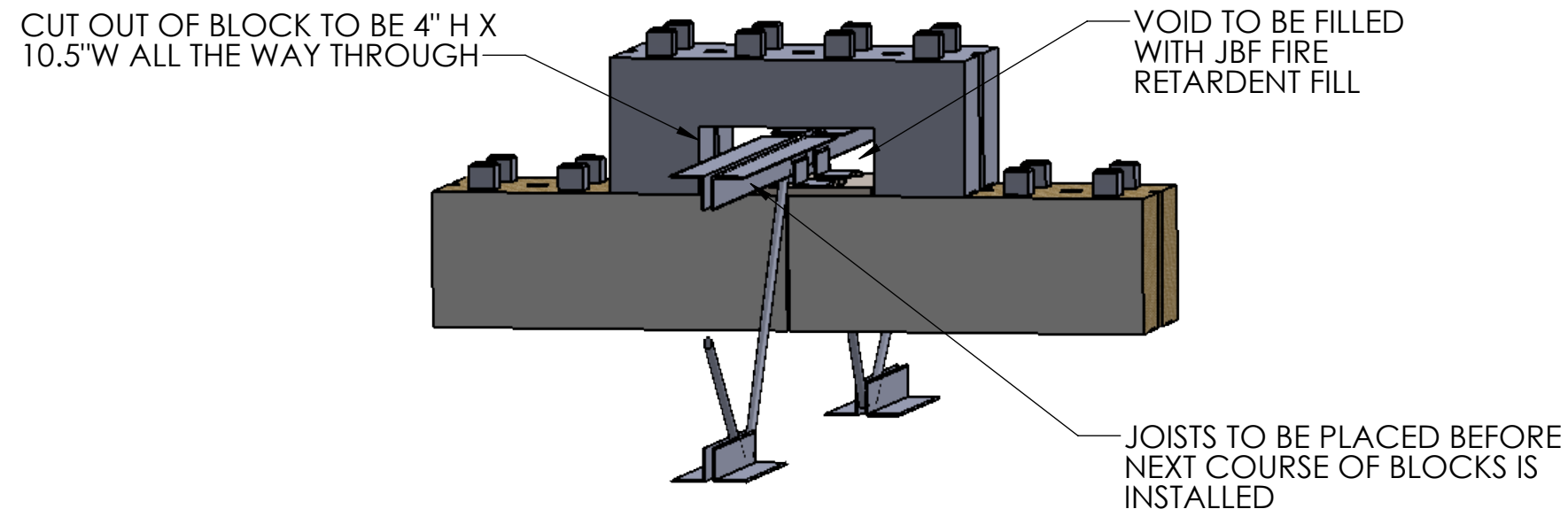
TITLE: STEEL JOIST LOCATION DET.		
SIZE B	DWG. NO. JBF-DRW-Manual	REV
SCALE: 1:10	2016-03-14	SHEET 19 OF 24



BEARING PLATE DETAIL



JOIST CONNECTION TO BEARING PLATE



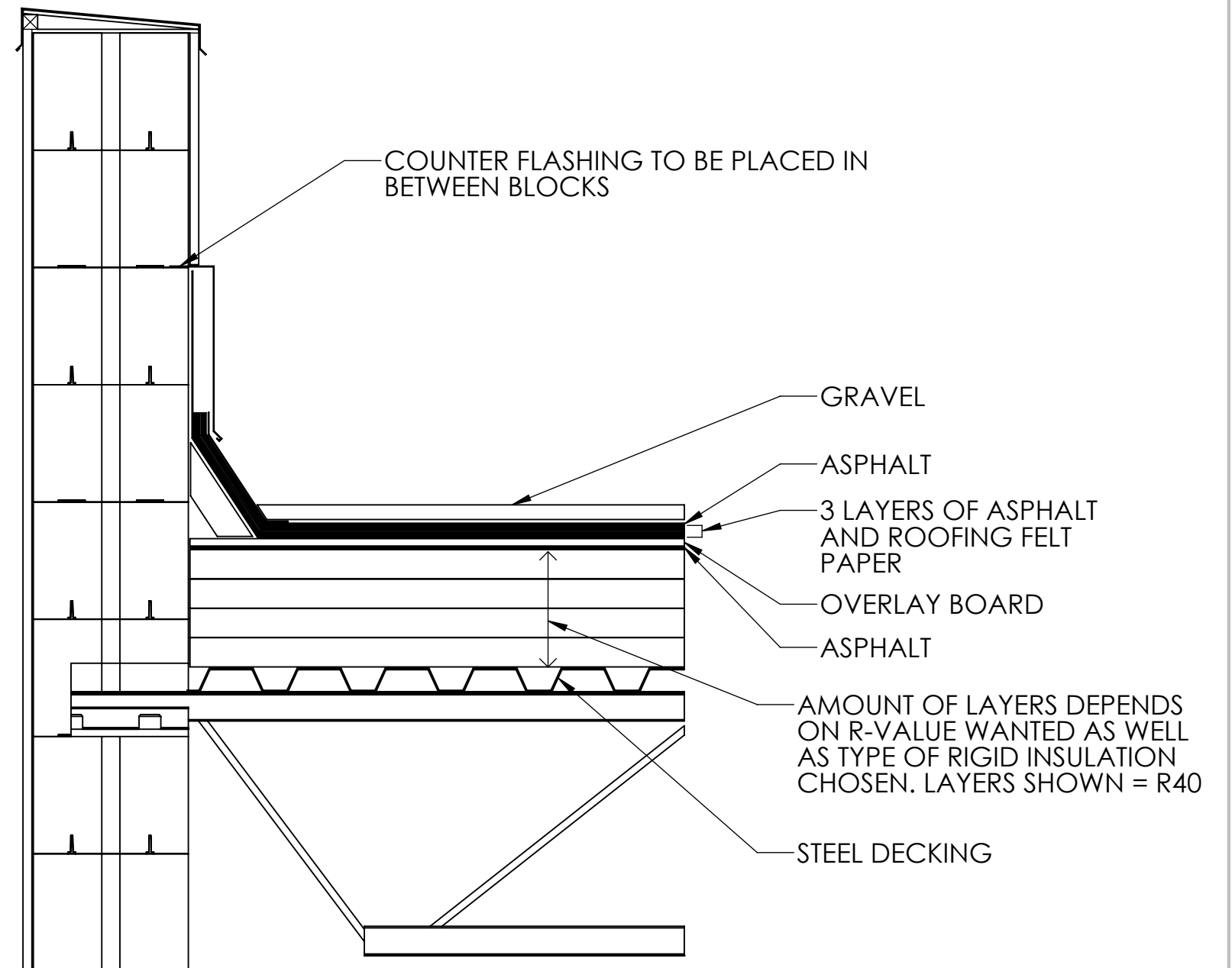
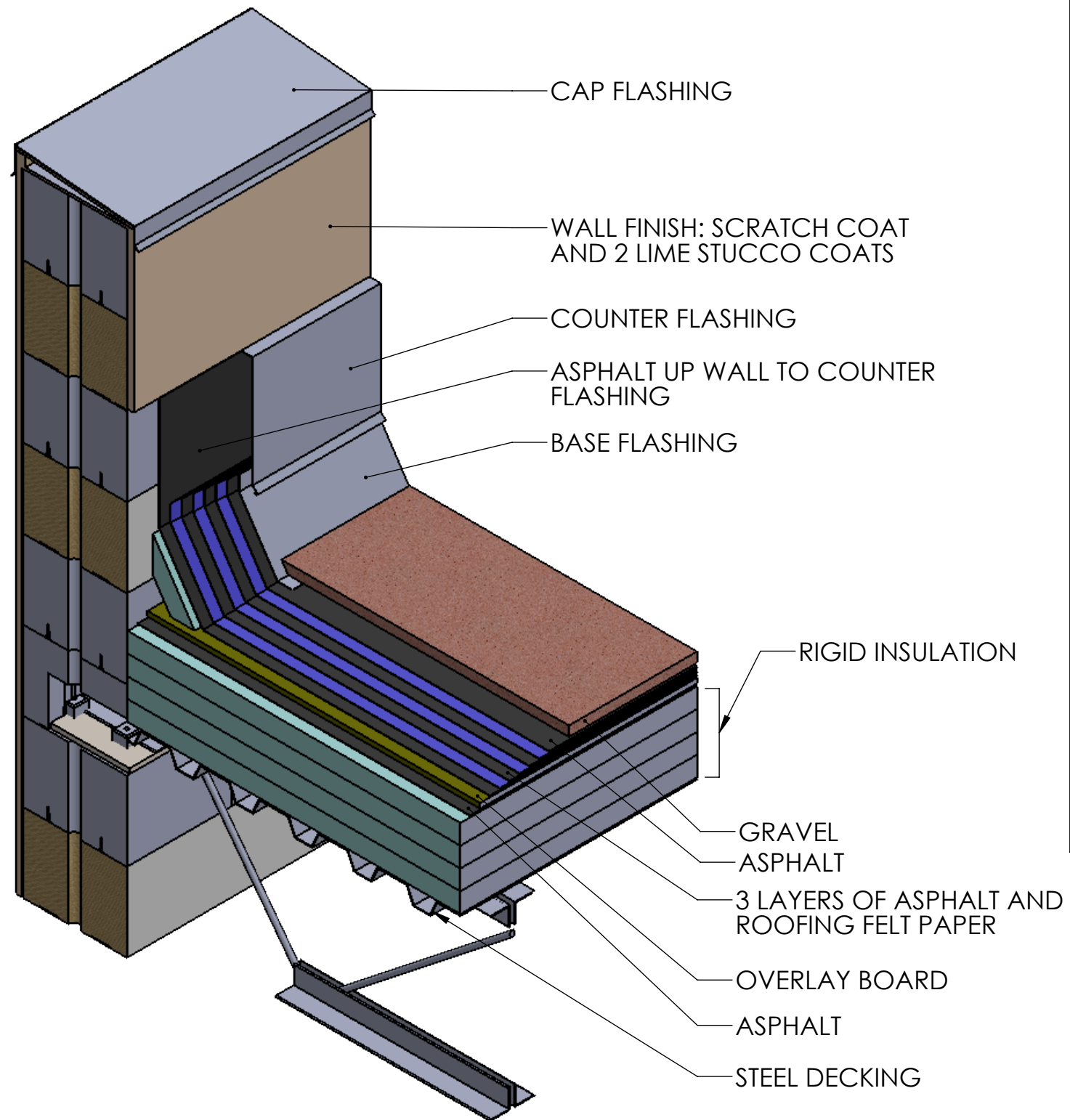
JOIST HOLE DETAIL

THESE ARE CONECTION DETAILS FOR ROOF JOISTS IN THE
INTERIOR WALL



PROPRIETARY AND CONFIDENTIAL
THE INFORMATION CONTAINED IN THIS DRAWING IS THE SOLE PROPERTY OF JUST
BIOFIBER STRUCTURAL SOLUTIONS CORP. ANY REPRODUCTION IN PART OR AS
A WHOLE WITHOUT THE WRITTEN PERMISSION OF JUST BIOFIBER STRUCTURAL
SOLUTIONS CORP. IS PROHIBITED. PROTECTED BY MULTIPLE PATENTS.
DO NOT SCALE DRAWING

TITLE: STEEL JOIST LOCATION DET.		
SIZE B	DWG. NO. JBF-DRW-Manual	REV
SCALE: 1:10	2016-03-14	SHEET 20 OF 24

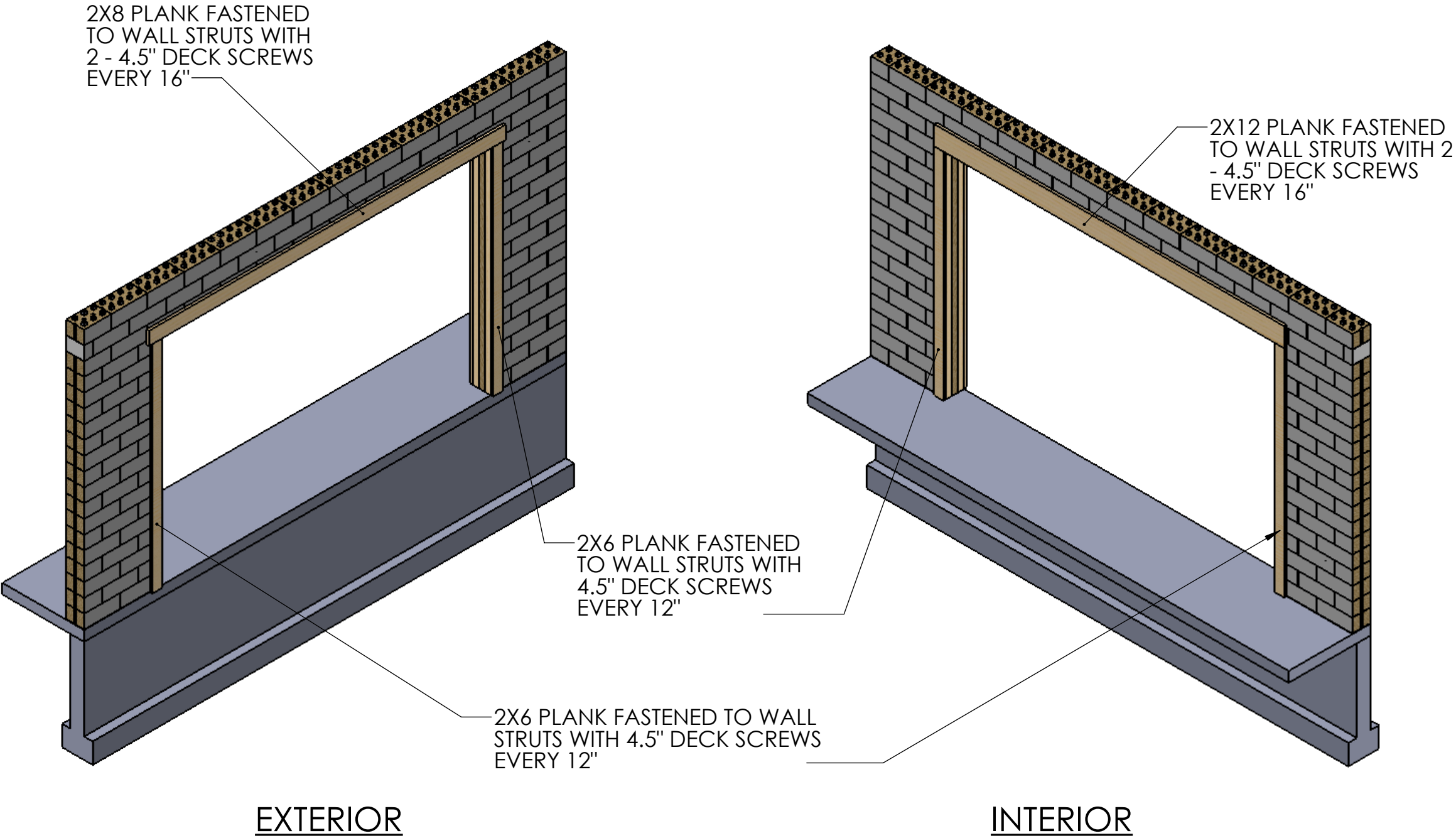


PROPRIETARY AND CONFIDENTIAL
 THE INFORMATION CONTAINED IN THIS DRAWING IS THE SOLE PROPERTY OF JUST BIOFIBER STRUCTURAL SOLUTIONS CORP. ANY REPRODUCTION IN PART OR AS A WHOLE WITHOUT THE WRITTEN PERMISSION OF JUST BIOFIBER STRUCTURAL SOLUTIONS CORP. IS PROHIBITED. PROTECTED BY MULTIPLE PATENTS.
 DO NOT SCALE DRAWING

TITLE:
PARAPET DETAIL

SIZE	DWG. NO.	REV
B	JBF-DRW-Manual	
SCALE: 1:10	2016-03-14	SHEET 21 OF 24

OPENING SHOWN IS FOR A 16'W X 14'H
OVERHEAD DOOR

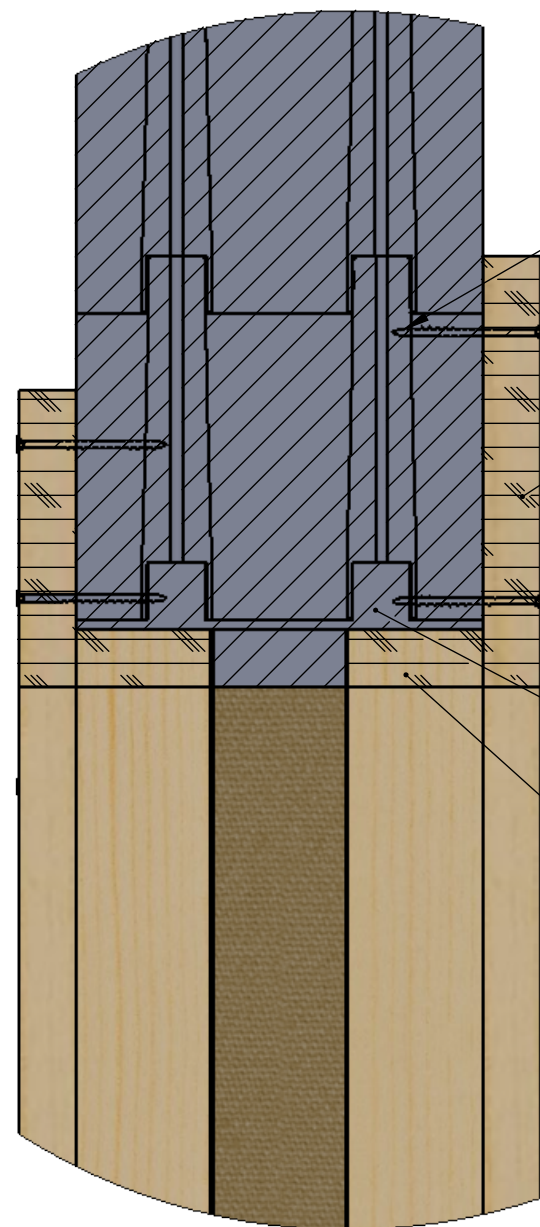


PROPRIETARY AND CONFIDENTIAL
THE INFORMATION CONTAINED IN THIS DRAWING IS THE SOLE PROPERTY OF JUST BIOFIBER STRUCTURAL SOLUTIONS CORP. ANY REPRODUCTION IN PART OR AS A WHOLE WITHOUT THE WRITTEN PERMISSION OF JUST BIOFIBER STRUCTURAL SOLUTIONS CORP. IS PROHIBITED. PROTECTED BY MULTIPLE PATENTS.
DO NOT SCALE DRAWING

TITLE:
**O.H. DOOR
FRAMING DET.**

SIZE	DWG. NO.	REV
B	JBF-DRW-Manual	

SCALE: 1:50 | 2016-03-14 | SHEET 22 OF 24



DECK SCREWS
INTO STRUTS

INTERIOIR 2X12 PLANK

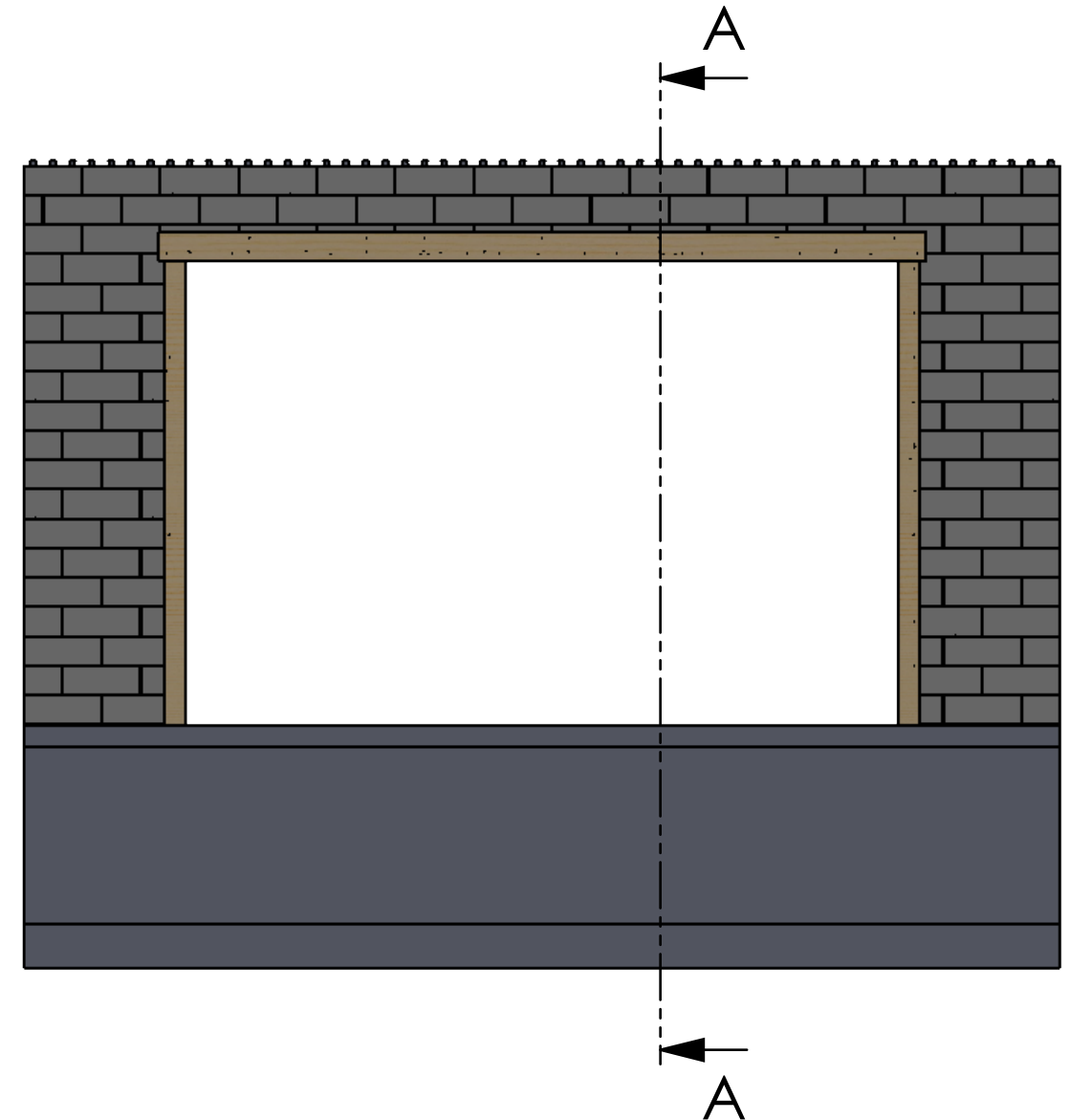
STARTER STRIP

SEE DRAWING JBF-Wall-1000-3
FOR FRAMING DETAILS

DETAIL A
SCALE 1 : 5



SECTION A-A



PROPRIETARY AND CONFIDENTIAL
THE INFORMATION CONTAINED IN THIS DRAWING IS THE SOLE PROPERTY OF JUST
BIOFIBER STRUCTURAL SOLUTIONS CORP. ANY REPRODUCTION IN PART OR AS
A WHOLE WITHOUT THE WRITTEN PERMISSION OF JUST BIOFIBER STRUCTURAL
SOLUTIONS CORP. IS PROHIBITED. PROTECTED BY MULTIPLE PATENTS.
DO NOT SCALE DRAWING

TITLE:

O.H. DOOR
FRAMING DET.

SIZE

B

DWG. NO.

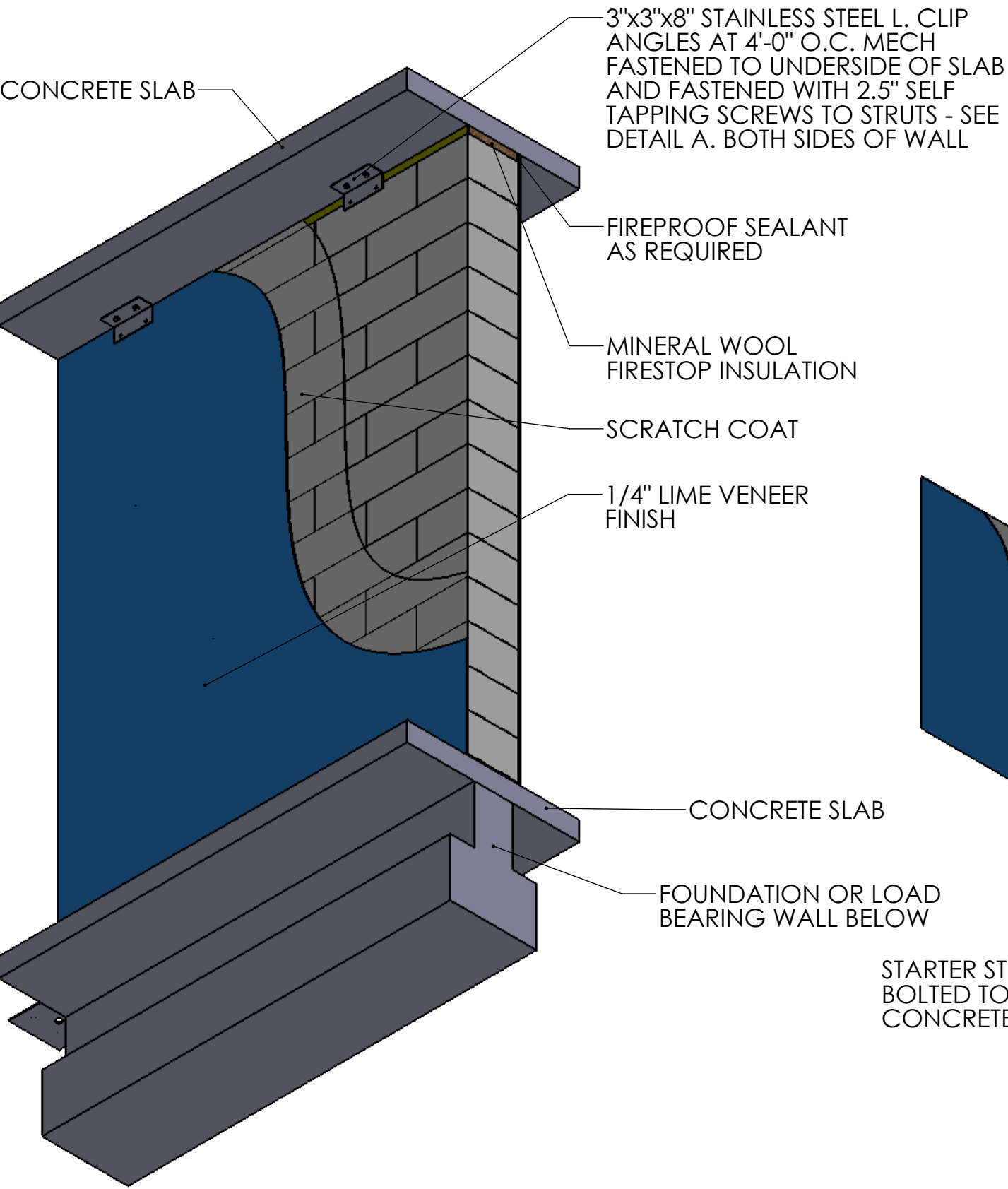
JBF-DRW-Manual

REV

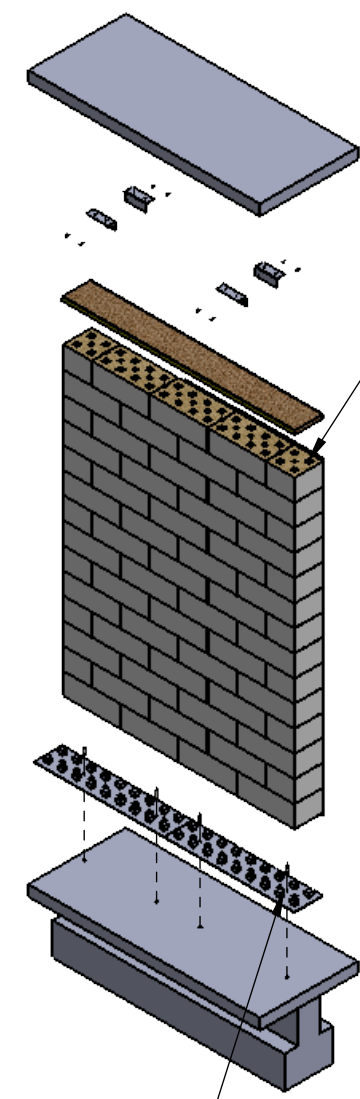
SCALE: 1:50

2016-03-14

SHEET 23 OF 24



STARTER STRIPS ARE HILTI BOLTED TO THE CONCRETE FLOOR

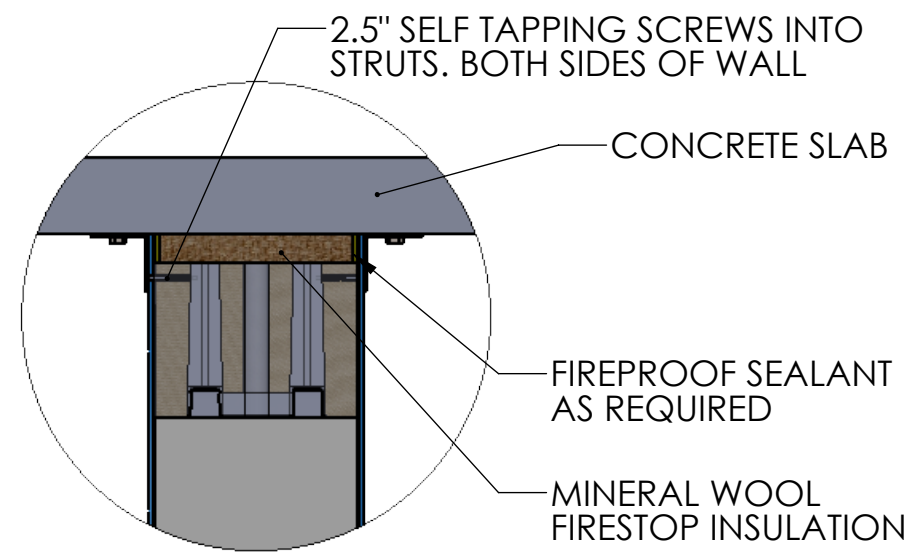


NOTE:
ALL ADJACENT FACES OF ALL BLOCKS TO BE BONDED TOGETHER WITH LIME ADHESIVE.

ALL STRUTS OF THE STRUCTURAL FRAME IN THE BLOCKS ARE TO BE BONDED WITH THE STRUCTURAL FRAME ABOVE WITH ADHESIVE FORMING A MONOLITHIC STRUCTURE.

ALL STARTER STRIPS TO BE BONDED WITH THE STRUCTURAL FRAMES OF THE BLOCKS ABOVE WITH ADHESIVE.

BLOCKS WITH THE STRUTS CUT FLUSH ARE TO BE USED FOR THE TOP ROW



DETAIL A
SCALE 1 : 10



PROPRIETARY AND CONFIDENTIAL
THE INFORMATION CONTAINED IN THIS DRAWING IS THE SOLE PROPERTY OF JUST BIOFIBER STRUCTURAL SOLUTIONS CORP. ANY REPRODUCTION IN PART OR AS A WHOLE WITHOUT THE WRITTEN PERMISSION OF JUST BIOFIBER STRUCTURAL SOLUTIONS CORP. IS PROHIBITED. PROTECTED BY MULTIPLE PATENTS.
DO NOT SCALE DRAWING

TITLE:
FIRE WALL DETAIL

SIZE	DWG. NO.	REV
B	JBF-DRW-Manual	
SCALE: 1:20	2016-03-14	SHEET 24 OF 24